





Office of the Village Manager

MEMORANDUM

To: Honorable Mayor & Members of the Village Council
Thru: Howard W. Brown, Jr., Village Manager 
From: Daniel W. Eick, Management Analyst 
CC: Village Staff
Date: July 16, 2020
Re: Bi-Monthly Report and Update (For week ending in Saturday, July 18, 2020)

Updates on the ongoing outbreak of COVID-19 are included below prior to handling necessary administrative matters.

Updates on COVID-19

On Thursday, July 7, the Martin County Board of County Commissioners passed an emergency ordinance requiring face coverings be worn in public. The order applies to all incorporated and unincorporated areas of Martin county and, while supplies are available, mask will be supplied to the public through County partnerships. The relevant press releases are included below for review and distribution. For more information please visit www.martin.fl.us/Coronavirus.

Additionally, The Village has a limited amount of free COVID-19 care packages still available to the public. Each package includes 3 face masks, Information on how to fill out the 2020 Census, and educational material on how to best protect against COVID-19. Interested individuals should contact 772-597-9900 to arrange for pick up while supplies last.

The Village's Reopening Task Force has finished implementing necessary safety precautions and has begun a phased reopening of Village Hall. A press release on current plans was produced and is included below for review and distribution. Currently, Village Hall will be open every Tuesday and Wednesday from 8:00 AM to 6:00 PM. If you have questions or concerns, please contact Village Clerk Susan Owens at sowens@indiantonfl.gov.

Finally, for those who wish to review it, the latest update from the Florida State Joint Information Center on COVID-19 is included below.

Regular administrative matters continue below.

Village Manager's Office

Village Schedule

A schedule of upcoming events is included below:

- The next Regular Council Meeting is scheduled for Thursday, July 23, at 6:30 PM. Once again, the meeting will be held via Zoom, and members of the public are encouraged to attend. Further information can be found at the following link:
 - o <https://www.indiantownfl.gov/village-clerk/page/virtual-meeting-information>
- The next Indiantown Community Trust Fund Committee Meeting is scheduled for Wednesday, July 29, at 3:00 PM. The Committee will discuss recommendations supplied by Council during the July 23 Regular Meeting. Further information can be found at:
 - o <https://www.indiantownfl.gov/community/page/virtual-indiantown-community-trust-fund-committee-meeting>
- The next Virtual Fire Rescue/EMS RFP Committee Meeting is scheduled for Tuesday, August 4, at 10:00 AM. The Committee will provide an update on actions taken at previous meetings. Further information is forthcoming shortly.
- The first LDR workshop will be held virtually on Thursday, July 30, 2020 at 6:30 pm. The details will be placed <https://www.indiantownfl.gov/community/page/virtual-ldr-workshop>
- Please be advised, village staff are currently working to schedule several budget workshops throughout August. Further information will be provided to the public when available.

Finally, it should be noted while not all meetings or announcements necessitate Council action, all questions from the public are welcome. For further information please contact Management Analyst Daniel Eick at deick@indiantownfl.gov.

Important Information

On Wednesday, July 8, 2020 the Indiantown Community Trust Fund (ICTF) Committee, as directed by Council, reconvened to deliberate upon the application process. The resulting conversation led the Committee to request reconsideration of the Council's previous decision. Pursuant to this, a letter was drafted by staff and is scheduled for consideration during the Thursday, July 23, Regular Meeting. That letter is included below for review. If you have questions or concerns, please contact Management Analyst Daniel Eick at deick@indiantownfl.gov.

Village staff have received the Phase 2 Environmental Site Assessment, from Empire Environmental, on the 4.91 Acre property located along SW Warfield Blvd. and SW Trail Drive. That document is included below for review.

Finally, the latest U.S. Census Bureau 2020 Self Response Newsletter has been provided to staff and is included below.

Village Clerk's Office

Human resources

Critical staff updates are highlighted here from the Village Clerk's Office:

- The Village has hired a temporary part-time Safety Coordinator to screen customers prior to their entry into Village Hall. To ensure everyone's safety she will be performing touchless temperature checks and checking all entrants wear face coverings and sanitize their hands properly. She will also be assisting with administrative matters when available.

Emergency Management Matters

Staff are in contact with state and local officials to monitor the COVID-19 pandemic situation and continue to update our COVID-19 webpage as needed. In addition to this, staff have been developing the following to increase prevention:

- The Clerk's Office has finished installing glass shielding at Village hall and is ordering additional safety supplies for use at countertops. These supplies will include equipment for our new safety coordinator who will be screening customers during our phase 1 re-opening.

Several updates regarding the reopening of Village Hall are highlighted here:

- Phase 1 of the Village Hall reopening plan has commenced. For the immediate future, Village Hall will be open on Tuesdays and Wednesdays between 8:00 AM and 6:00 PM. Touchless temperature checks, face coverings, and hand sanitization are all required prior to entry.
- Only people physically required to complete transactions should consider entering Village Hall. While transactions are occurring, it is recommended that family and friends remain outside, or in the outer lobby, when possible.
- Only four (4) individuals will be allowed in the office at a time. All individuals must maintain proper social distancing, at six (6) feet apart while present.

Technology Updates

Several improvements to the Village's meeting systems are ongoing at the Indiantown Civic Center:

- Installation and training for the Village's new live streaming systems has been completed.
- Currently, staff plan to resume in person meetings in August 2020 unless the Governor extends his order allowing municipalities to continue virtual meetings.

Code Compliance Department

The Code Compliance Department has nothing major to report currently. The most recent weekly report prepared by Code Enforcement Officer Robert Perez is included below for review and distribution.

Building & Permits Department

The Building & Permits Department has nothing major to report currently. The most recent monthly permit report is attached to this document for review.

Finance Department

Finance Department staff are in the process of upgrading the Village's accounting systems from Quick books to a newer system named Black Mountain Software (BMS). BMS is a full-service Accounting Software package designed for governmental entities. System updates are expected to be completed by the end of July 2020.

Parks & Recreations Department

The Parks and Recreation Department has nothing major to report currently.

Planning and Development Department

After a few short delays Casa Bella, an approved mixed-use building with 7 apartments located on 153rd Street, will be ready to submit a construction building permit in the near future.

Staff are working with Venture Park PUD, who's jurisdiction is split between Martin County and the Village, to develop an annexation application. That annexation, and the required PUD amendment, are scheduled for Council consideration in the next month.

Finally, staff are coordinating with the developers of the Bio Medical Industrial Park, as well as Parkview Apartments, on their minor site plans. Both projects are expected to submit applications shortly.

Community & Economic Development Department

Village staff are coordinating with Calvin, Giordano & Associates (CGA) to finalize the Village's Land Development Regulations (LDR). Articles for phase one of development will be discussed during the Village's Council Workshop currently scheduled for Thursday, July 30th. Further information on that meeting will be forthcoming shortly.

Public Works and Engineering Department

The Village's Public Works Director, William Archebelle, has several items to highlight:

- PRP Construction is expecting to begin work on the reconstruction of Washington and Trail Drive within the next two (2) weeks. Further information is forthcoming.
- Village staff are in the process of purchasing signage, barricades, and traffic control devices to minimize costs and times associated with roadway responses in the future.

###

End of Memorandum



For immediate release: July 7, 2020
Contact: Martha Ann Kneiss, 772-214-2790

Martin County passes emergency ordinance for mandatory face coverings in public

On Thursday, July 7, the Martin County Board of County Commissioners passed an emergency ordinance requiring face coverings be worn in public to help reduce the spread of COVID-19. This order applies to all incorporated and unincorporated areas.

"We cannot ignore the increase in cases in our community, neighboring counties and across the state. And, today, based on medical and health professionals' recommendations, the board passed an emergency ordinance requiring all residents and visitors wear face coverings when in public in Martin County," said Board Chair Harold Jenkins.

Face coverings must be worn by all persons in:

Indoor Public Places, Businesses and Establishments. Face coverings must be worn by all persons while obtaining or providing any goods or services or otherwise visiting or working in any indoor public place, business or establishment.

Outdoor Public Places, Businesses and Establishments. Face coverings must be worn by all persons while obtaining or providing any goods or services or otherwise visiting or working in outdoor public places, businesses and establishments where social distancing in accordance with CDC guidelines is not possible and/or not being practiced.

Restaurants and Food Service Establishments. Face coverings must be worn by all persons in restaurants and food service establishments whether indoors or outdoors except when actively consuming food or beverages.

County and Municipal Government Facilities. All persons accessing governmental buildings for the purposes of conducting public business, visitation, contracting and maintenance, delivery or any other activity requiring a presence in a governmental building shall wear face coverings at all times while in the building. For purposes of this Emergency Order, governmental buildings shall mean any Martin County or municipal-owned and operated buildings, including, but not limited to, office buildings, fire rescue stations, service centers, recreational facilities and libraries.

(more)

MARTIN TOGETHER

PLANNING FOR OUR RECOVERY



COVID-19 Release #45

For immediate release: July 9, 2020

Contact: Martha Ann Kneiss, 772-214-2790

Martin County makes face coverings available

On Tuesday, July 7, the Martin County Board of County Commissioners adopted an emergency ordinance requiring face coverings be worn in public to help reduce the spread of COVID-19. Martin County will make face coverings available to the general public with the generous assistance of our local chambers of commerce, the Business Development Board of Martin County (BDB) and county libraries.

Local Businesses

Beginning Friday, July 10, local businesses can pick up boxes of disposable masks from one of the five chambers of commerce or the BDB, while supplies last. Limit 150 per business. Local businesses can offer the disposable masks to residents and visitors without a mask.

Jensen Beach Chamber of Commerce
1960 NE Jensen Beach Blvd., Jensen Beach

Hobe Sound Chamber of Commerce
8958 SE Bridge Rd., Hobe Sound

Stuart/Martin County Chamber of Commerce
1650 S. Kanner Hwy., Stuart

Indiantown Chamber of Commerce
15545 SW Warfield Blvd., Indiantown

Palm City Chamber of Commerce
3168 SW Martin Down Blvd., Palm City

Business Development Board of Martin County
1002 SE Monterey Commons Blvd., Suite 207, Stuart

Residents

Beginning Friday, July 10, residents can pick up reusable, cloth masks at one of the six Martin County Library branches during normal operating hours, while supplies last. Distribution is limited to 2 masks per person and no more than 8 masks per household.

Blake Library
2351 SE Monterey Rd., Stuart

Hoke Library
1150 NW Jack Williams Way, Jensen Beach

Elisabeth Lahti Library
15200 SW Adams Ave., Indiantown

Peter and Julie Cummings Library
2551 SW Matheson Ave., Palm City

Hobe Sound Library
10595 SE Federal Hwy., Hobe Sound

Robert Morgade Library
5851 SE Community Dr., Stuart

For more information, visit www.martin.fl.us/Coronavirus or call the Community Information Center, Monday through Friday from 8 a.m. to 5 p.m. Follow us on [Facebook](#) and [Twitter](#) to stay up-to-date on social media. For health questions related to COVID-19, residents can call the 24-hour Florida Department of Health (FDOH) Call Center at 866-779-6121 or email COVID-19@flhealth.gov. Information is also available on the FDOH [website](#).

###

MAK/ADM



MARTIN COUNTY BOARD OF COUNTY COMMISSIONERS
2401 SE MONTEREY ROAD, STUART, FL 34996
(772) 288-5400

Facebook | [MartinCountyBoardofCountyCommissioners](#)
Twitter | [@MartinCountygov](#)
Instagram | [@martincountyflorida](#)



This document may be reproduced upon request in an alternative format by contacting the County ADA Coordinator (772) 320-3131, the County Administration Office (772) 288-5400, Florida Relay 711, or by completing our accessibility feedback form at www.martin.fl.us/accessibility-feedback.



Florida State Emergency Response Team Florida Division of Emergency Management

Florida Department of Health Updates New COVID-19 Cases, Announces One Hundred Thirty-Two Deaths Related to COVID-19

Florida Division of Emergency Management sent this bulletin at 07/14/2020 01:45 PM EDT

FOR IMMEDIATE RELEASE July 14, 2020

Contact: Joint Information Center on COVID-19 for the State of Florida (850) 815-4940, ESF14@em.myflorida.com

Florida Department of Health Updates New COVID-19 Cases, Announces One Hundred Thirty-Two Deaths Related to COVID-19

~287,789 positive cases in Florida residents and 3,840 positive cases in non-Florida residents~

TALLAHASSEE — The Florida Department of Health (DOH), in order to provide more comprehensive data, releases a report on COVID-19 cases in Florida once per day. The DOH COVID-19 dashboard is also providing updates once per day. The state also provides a report detailing surveillance data for every Florida county, which is available [here](#).

In order to make the daily COVID-19 report easier to download and more accessible, the daily report will now separate case line data in a separate PDF. Both reports will continue to be updated daily. The case line data report is available [here](#).

Test results for more than 67,100 individuals were reported to DOH as of midnight, on Monday, July 13. Today, as reported at 11 a.m., there are:

- 9,194 new positive COVID-19 cases (9,122 Florida residents and 72 non-Florida residents)
- 132 Florida resident deaths related to COVID-19

On July 13, 15.02 percent of new cases** tested positive.

There are a total of 291,629 Florida cases*** with 4,409 deaths related to COVID-19.

Since July 13, the deaths of one hundred thirty-two Florida residents who tested positive for COVID-19 have been reported in Brevard, Citrus, Clay, Collier, Dade, Duval, Hendry, Hernando, Hillsborough, Indian River, Lee, Leon, Nassau, Orange, Osceola, Palm Beach, Pasco, Pinellas, Polk and Seminole counties.

Florida long-term care facility data:

- The list of long-term care facilities with active COVID-19 cases is available [here](#).
- The list of long-term care facilities with deaths is available [here](#), which is updated weekly.
- To date, 2,158 individuals that were staff or residents of a long-term care facility have died.

The antibody COVID-19 test results report will be provided once a week and contains county, race and lab information on antibody COVID-19 tests conducted in Florida. The report for antibody tests conducted by private health care providers is available [here](#) and the report for antibody tests conducted at state-supported COVID-19 testing sites is available [here](#).

More information on a case-by-case basis can also be found [here](#).

Mandatory face coverings, pg. 2

Face coverings are not required for the following:

- Children under six (6) years of age and any child while under the custody of a licensed childcare facility, including schools, summer camps and daycare centers.
- Individuals prohibited from wearing face coverings by Federal or State safety or health regulations.
- Public safety, fire or other life safety personnel that have personal protective equipment requirements governed by their respective agencies.
- Persons actively engaged in exercise and who are social distancing in accordance with CDC guidelines.
- Persons receiving goods and services from a business or establishment for the shortest practical period of time during which the receipt of such goods or services necessarily precludes the wearing of a face covering such as, but not limited to, consuming food or beverage or receiving dental services, facial grooming or treatments.
- Persons who have a medical condition or disability that makes the wearing of face coverings unsafe.
- Face coverings may be removed temporarily while assisting persons who are hearing impaired or who rely on reading lips in order to communicate.
- Persons in private rooms of a lodging establishment, such as hotel, motel or vacation rental; however, face coverings must be worn in common areas as proscribed by this ordinance.
- Persons engaged in outdoor work or recreation with appropriate social distancing pursuant to CDC guidelines in place and being practiced.

To view this emergency ordinance in its entirety, a summary and FAQs, as well as all other COVID-19 information related to Martin County, visit www.martin.fl.us/Coronavirus. Follow us on [Facebook](#) and [Twitter](#) for additional county information. For health questions related to COVID-19, residents can call the 24-hour Florida Department of Health (FDOH) Call Center at 866-779-6121 or email COVID-19@flhealth.gov. Information is also available on the FDOH [website](#).

###

MAK/ADM



This document may be reproduced upon request in an alternative format by contacting the County ADA Coordinator (772) 320-3131, the County Administration Office (772) 288-5400, Florida Relay 711, or by completing our accessibility feedback form at www.martin.fl.us/accessibility-feedback.

Confirmed Cases in Florida Residents	287,789
Confirmed by DOH	10,101
Tested by private labs	277,688
Characteristics of Florida Resident Cases	
FL resident diagnosed & isolated out of state*	8
Deaths	4,409
Cases in Non-Florida Residents	3,840
Confirmed by DOH	169
Tested by private labs	3,671

Total Cases Overview	291,629
Traveled	2,922
Contact with confirmed case	77,771
Travel & contact with confirmed case	2,846
Unknown and Under Investigation	204,250

* Florida residents that are diagnosed with COVID-19 and isolated out of state are not reflected on the Florida map.

**This percentage is the number of people who test positive for the first time divided by all tests, excluding people who have previously tested positive.

***Total cases overview includes positive cases in Florida residents and non-Florida residents tested in Florida.

More Information on COVID-19

To find the most up-to-date information and guidance on COVID-19, please visit the Department of Health's dedicated [COVID-19 webpage](#). For information and advisories from Centers for Disease Control and Prevention (CDC), please visit the [CDC COVID-19 website](#), this website is also available in Spanish and Creole. For more information about current travel advisories issued by the U.S. Department of State, please visit the [travel advisory website](#).

For any other questions related to COVID-19 in Florida, please contact the Department's dedicated COVID-19 Call Center by calling **1-866-779-6121**. The Call Center is available **24 hours per day**. Inquiries may also be emailed to **COVID-19@flhealth.gov**.

About the Florida Department of Health

The Florida Department of Health, nationally accredited by the [Public Health Accreditation Board](#), works to protect, promote and improve the health of all people in Florida through integrated state, county and community efforts.

Follow us on [Facebook](#), [Instagram](#) and Twitter at [@HealthyFla](#). For more information please visit www.FloridaHealth.gov.



Village of *Indiantown* **News Release**

For Immediate Release

DATE: July 14, 2020

Contacts:

Daniel Eick, Acting Public Information Officer, 772-233-0713

Susan A. Owens, MPA, MMC, Village Clerk, 772-285-7740

INDIANTOWN BEGINS PHASED RE-OPENING OF VILLAGE HALL

Village Hall to re-open Tuesdays and Wednesdays, 8 a.m. to 6 p.m.

Indiantown, FL – The Village of Indiantown will begin Phase One of re-opening Village Hall beginning Tuesday, July 14, 2020, at 8 a.m. Village Hall will be opened for in-person governmental business on Tuesdays and Wednesdays from 8 a.m. to 6 p.m. Village Hall is located at 16550 SW Warfield Blvd., Indiantown, FL 34956.

“We will be requiring all visitors to wear face masks and have their temperature checked to enter the building,” said Village Manager Howard W. Brown, Jr. “We will have hand sanitizer stations throughout the building and visitors will be required to stay at least six feet from other visitors and Village staff.”

“We are utilizing a phased approach in an effort to ensure everyone’s safety. Safety is our number one concern right now,” said Susan Owens, Village Clerk and Village Emergency Management Coordinator. If a visitor arrives at Village Hall and does not have a mask, one will be provided to them, while supplies last. Additionally, the Village will limit the number of visitors admitted at any one time to maintain proper social distancing. If a visitor’s temperature is elevated, indicating a possible illness, the visitor will not be allowed entry. The Village is requesting that only those necessary to complete required transactions physically come into the building due to occupancy limitations.

Village business will continue to be conducted via e-mail and via telephone on Mondays and Thursdays from 8:00 a.m. to 6:00 p.m. Village Hall is closed on Fridays. Staff will continue to monitor the situation before making any decision to fully re-open Village Hall.

Indiantown became the first and only municipality in Martin County to mandate wearing facial coverings in public. The Village has purchased masks for residents and has distributed thousands of them over the past several months. Village Hall has been closed since March when emergency orders were first issued for the COVID-19 pandemic.

##

Indiantown is a rural community in Florida’s Treasure Coast. First established in the early 1900’s, then incorporated on December 31, 2017, Florida’s youngest municipality hosts a diverse population of roughly 6,000 residents. While it may be small, its resident engagement is exemplary and its potential for community building and new business opportunity is large. The Village mission seeks to enable economic prosperity and business while building pride and cohesion through hands-on self-governance.

###



Village of *Indiantown* **News Release**

Para Publicación Inmediata

14 de julio de 2020

Contactos:

Daniel Eick, Acting Public Information Officer, 772-233-0713

Susan A. Owens, MPA, MMC, Village Clerk, 772-285-9732

INDIANTOWN COMIENZA LA REAPERTURA FASADA DEL PUEBLO

El ayuntamiento reabre los martes y miércoles de 8 a.m. a 6 p.m.

Indiantown, FL – El Pueblo de Indiantown comenzará la Fase Uno de la reapertura del ayuntamiento a partir del martes, 14 de julio de 2020, a las 8 a.m. El ayuntamiento estará abierto para asuntos gubernamentales en persona los martes y miércoles de 8 a.m. a 6 p.m. El ayuntamiento está ubicado en 16550 SW Warfield Blvd., Indiantown, FL 34956.

"Exigiremos a todos los visitantes que usen cubrebocas y se les tomaremos la temperatura para entrar al edificio," dijo el administrador del Pueblo Howard W. Brown, Jr. "Tendremos estaciones desinfectantes para las manos en todo el edificio y los visitantes deberán permanecer en al menos a seis pies de otros visitantes y personal de la administración".

"Estamos utilizando un enfoque por fases en un esfuerzo por garantizar la seguridad de todos. La seguridad es nuestra principal preocupación en este momento," dijo Susan Owens, secretaria y coordinadora de gestión de emergencias del Pueblo. Si un visitante llega al ayuntamiento y no tiene mascarilla, se le proporcionará una, hasta agotar existencias. Además, el Pueblo limitará el número de visitantes admitidos en cualquier momento para mantener un distanciamiento social adecuado. Si la temperatura de un visitante es elevada, lo que indica una posible enfermedad, el visitante no podrá ingresar. La administración del Pueblo solicita que solo aquellos necesarios para completar las transacciones requeridas entren físicamente al edificio debido a limitaciones de ocupación.

Los negocios Del Pueblo continuarán realizándose por correo electrónico y por teléfono los lunes y jueves de 8 a.m. a 6 p.m. El ayuntamiento está cerrado los viernes. El personal continuará monitoreando la situación antes de tomar cualquier decisión de volver a abrir completamente el ayuntamiento.

Indiantown se convirtió en el primer y único municipio del condado de Martin en exigir el uso de revestimientos faciales (cubrebocas) en público. El Pueblo ha comprado cubrebocas para los residentes y ha distribuido miles de ellas en los últimos meses. El ayuntamiento ha estado cerrado desde marzo, cuando se emitieron por primera vez órdenes de emergencia para la pandemia COVID-19.

##

Indiantown es una comunidad rural en la Costa del Tesoro de Florida. Establecido por primera vez a principios de 1900, luego incorporado el 31 de diciembre de 2017, el municipio más joven de Florida alberga una población diversa de aproximadamente 6,000 residentes. Mientras el pueblo es pequeño, su compromiso con los residentes es ejemplar y su potencial para fomentar la comunidad y nuevas oportunidades comerciales es grande. Su misión busca habilitar la prosperidad económica y los negocios al tiempo que genera orgullo y cohesión a través del autogobierno práctico.



Village of Indiantown

July 10, 2020

To the honorable members of the Village Council of the Village of Indiantown:

On Wednesday, July 8, the Indiantown Community Trust Fund Committee met to reconsider the Village's Trust Fund application material. Under direction from Council, received during the June 25 regular meeting, the Committee deliberated upon disbursement, reporting, and accountability processes. As a result of this deliberation, the committee voted unanimously to request reconsideration of the Council's previous decision to alter the materials and, instead, maintain them as they are. This letter has been drafted pursuant to their request.

During conversation, Committee members voiced concern over the following items:

- 1) Altering the application to limit disbursement could place onerous pressure upon local nonprofits who, absent the Village's involvement, perform their duties admirably.
- 2) Altering the application, specifically by bolstering reporting requirements, could unnecessarily burden the workload of nonprofit and Village staffs. However, the Committee also agreed the delivery of receipts in final reports could aid in tracking.
- 3) Altering the application to enforce repayment of funds post project, outside of a legal contention, goes against the fund's spirit as a tool to aid the Village community and damages the Committee's authority to grant applicant funding requests.
- 4) Altering the application to enhance accountability, specifically by controlling funds, could damage the Village's reputation and discourage nonprofits from requesting aid.

Due to these concerns, the Committee recommends the Village Council reconsider altering the application materials apart from an addition of the following language, or similar language, to be considered by Council:

“Should applicant fail in part, or in full, to comply with the requirements laid out in Section 1.0 of the Village of Indiantown Trust Fund Agreement the applicant, pursuant to a vote held by the Village Council, can be disbarred from applying again within three (3) years or for the duration of the current trust fund period, whichever is greater.”

The Committee would like to thank the Village Council for their attention regarding this letter and, once more, request a reconsideration of their previous decision.

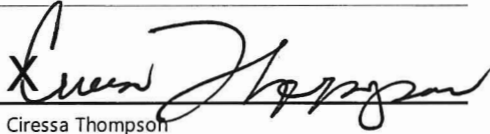
Respectfully,

X 

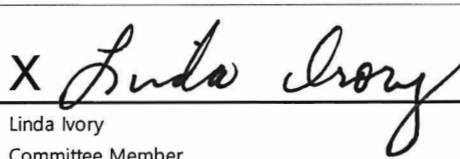
Anthony Dowling
Committee Chairman

X 

Olga Avellaneda
Committee Vice Chair

X 

Ciressa Thompson
Committee Member

X 

Linda Ivory
Committee Member

X 

Vernestine Palmer
Committee Member



PHASE II ENVIRONMENTAL SITE ASSESSMENT

**OF THE 4.91 ACRE PROPERTY LOCATED
ALONG S.W. WARFIELD BOULEVARD
SOUTH OF S.W. TRAIL DRIVE
INDIANTOWN, FLORIDA**

PREPARED FOR AND CERTIFIED TO

**THE VILLAGE OF INDIANTOWN
P.O. BOX 398
INDIANTOWN, FLORIDA 34956**

PREPARED BY

EMPIRE ENVIRONMENTAL, INC.

JULY 14, 2020



*Contamination Assessments,
Environmental Audits, Permitting*

EXECUTIVE SUMMARY

The Phase II Environmental Site Assessment consisted of a study to determine if contamination was present because of the existence of a former plant nursery on the property. Potential contaminant sources of concern included Chlorinated Pesticides and Arsenic. Four temporary monitoring wells and four soil borings were installed, and results of the sampling indicated that no contamination was present.

TABLE OF CONTENTS

1.0	<u>Introduction</u>	1
1.1	<u>Background</u>	1
1.2	<u>Scope of Services</u>	1
2.0	<u>Property Description and Adjacent Property</u>	1
2.1	<u>Legal Description</u>	2
3.0	<u>General Area</u>	2
4.0	<u>Soil</u>	2
5.0	<u>Sampling Methods</u>	2
5.1	<u>Groundwater</u>	2
5.2	<u>Soil</u>	3
6.0	<u>Results</u>	3
6.1	<u>Groundwater</u>	3
6.2	<u>Soil</u>	4
7.0	<u>Discussion</u>	4
8.0	<u>Conclusions</u>	4
9.0	<u>Recommendations</u>	5
10.0	<u>Limitations</u>	5

LIST OF FIGURES

		Page
FIGURE 1	Location Map	1-1
FIGURE 2	USGS Quad Sheet	1-2
FIGURE 3	Site Map	1-3
FIGURE 4	Sampling Locations	2-1

1.0 Introduction

This report constitutes a Phase II Environmental Site Assessment of a parcel of property located in Indiantown, Florida in Section 5, Township 40 South, Range 39 East, Martin County (Figures 1 & 2). The Phase II Environmental Site Assessment is designed to provide a preliminary indication whether contamination may be present on the subject property (the Site) due to potential contamination sources associated with a former plant nursery on the Site.

1.1 Background

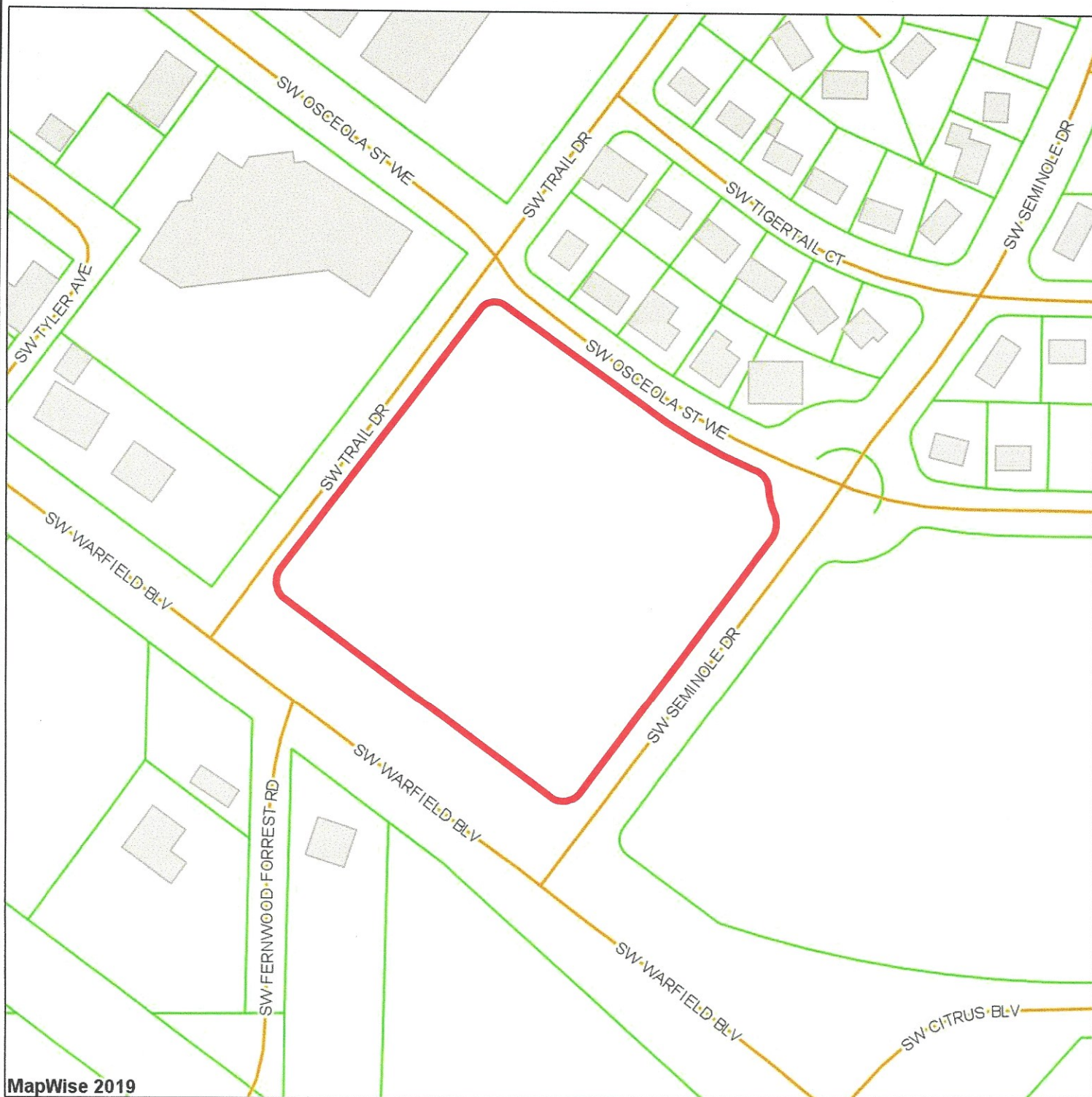
A Phase I Environmental Site Assessment was previously prepared. This Assessment consisted mainly of background research to assess local environmental conditions and the probability of environmental impact on the Site and reported that anecdotal information indicated a former plant nursery occupied the Site. The Phase I Environmental Site Assessment recommended conducting groundwater and soil testing to determine any possible impact from the previous land use. Figure 3 is a site plan of the parcel.

1.2 Scope of Services

1. Groundwater testing
2. Soil Testing
3. Compilation and review of data.
4. Preparation of Report

2.0 Property Description and Adjacent Property

The Site is an approximate 4.91 acre parcel located along S.W. Warfield Boulevard south of S.W. Trail Drive, Indiantown, Florida. It is bounded on the northwest by S.W. Trail Drive; on the northeast by S.W. Osceola Street; on the southeast by S.W. Seminole Drive; and on the southwest by a ditch and S.W. Warfield Boulevard. Across S.W. Trail Drive are a shopping center anchored by Rines Supermarket/ Hitchcock's Market and a Shell gas station with a Subway convenience store, across S.W. Osceola Street is a



MapWise 2019

EMPIRE
ENVIRONMENTAL, INC.

3206 S.E. Aster Ln. R-107
Stuart, Florida 34994
(772) 285-8385

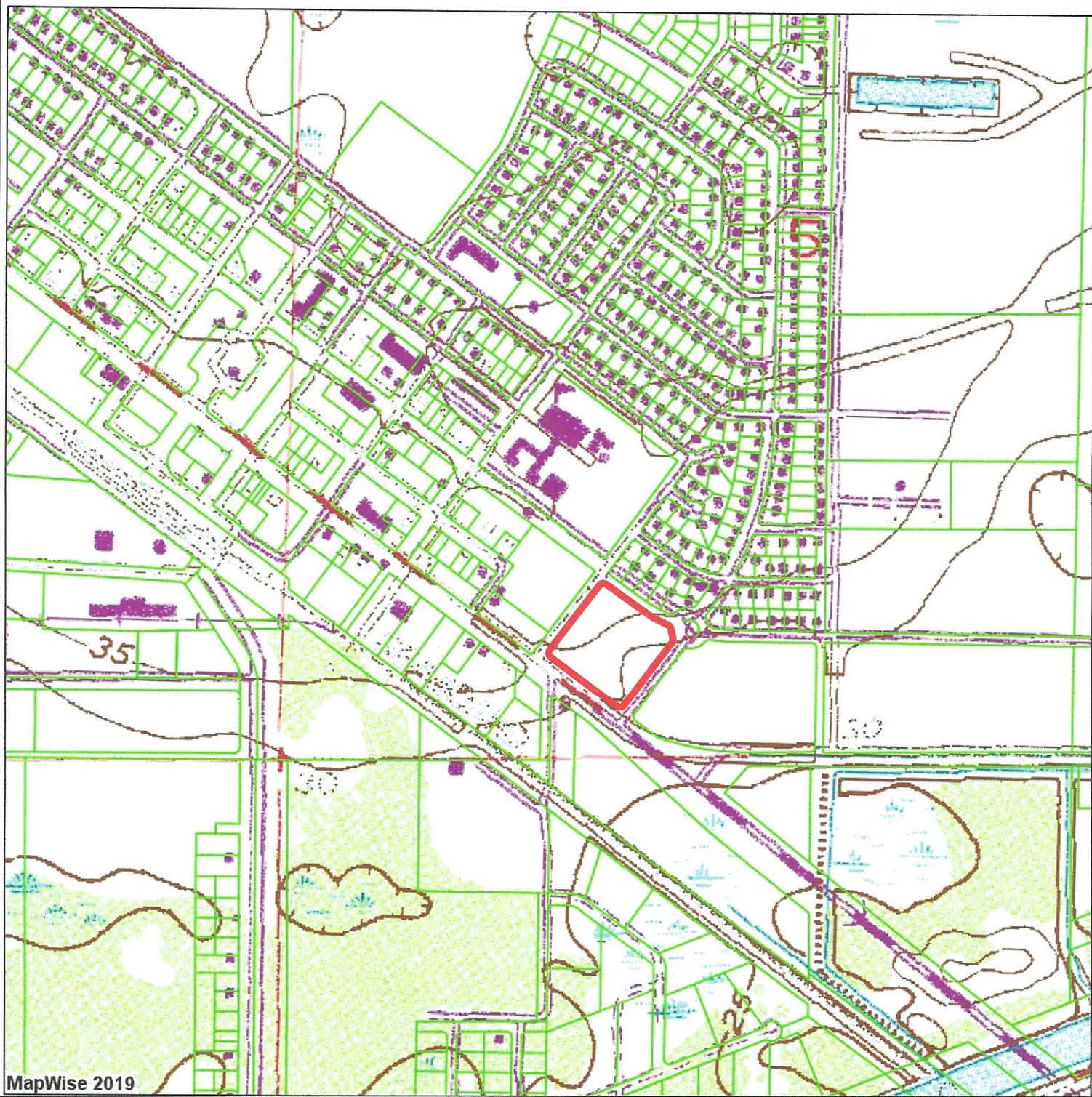
FIGURE 1
LOCATION MAP
S.W. WARFIELD BOULEVARD
INDIANTOWN, FLORIDA

DRAWN BY: M.L. Daniels

CHECKED BY: A.F.

DATE: 2/23/2020

JOB NO.: 2235-01.01



MapWise 2019

EMPIRE
ENVIRONMENTAL, INC.

3206 S.E. Aster Ln. R-107
Stuart, Florida 34994
(772) 285-8385

FIGURE 2

USGS QUADRANGLE

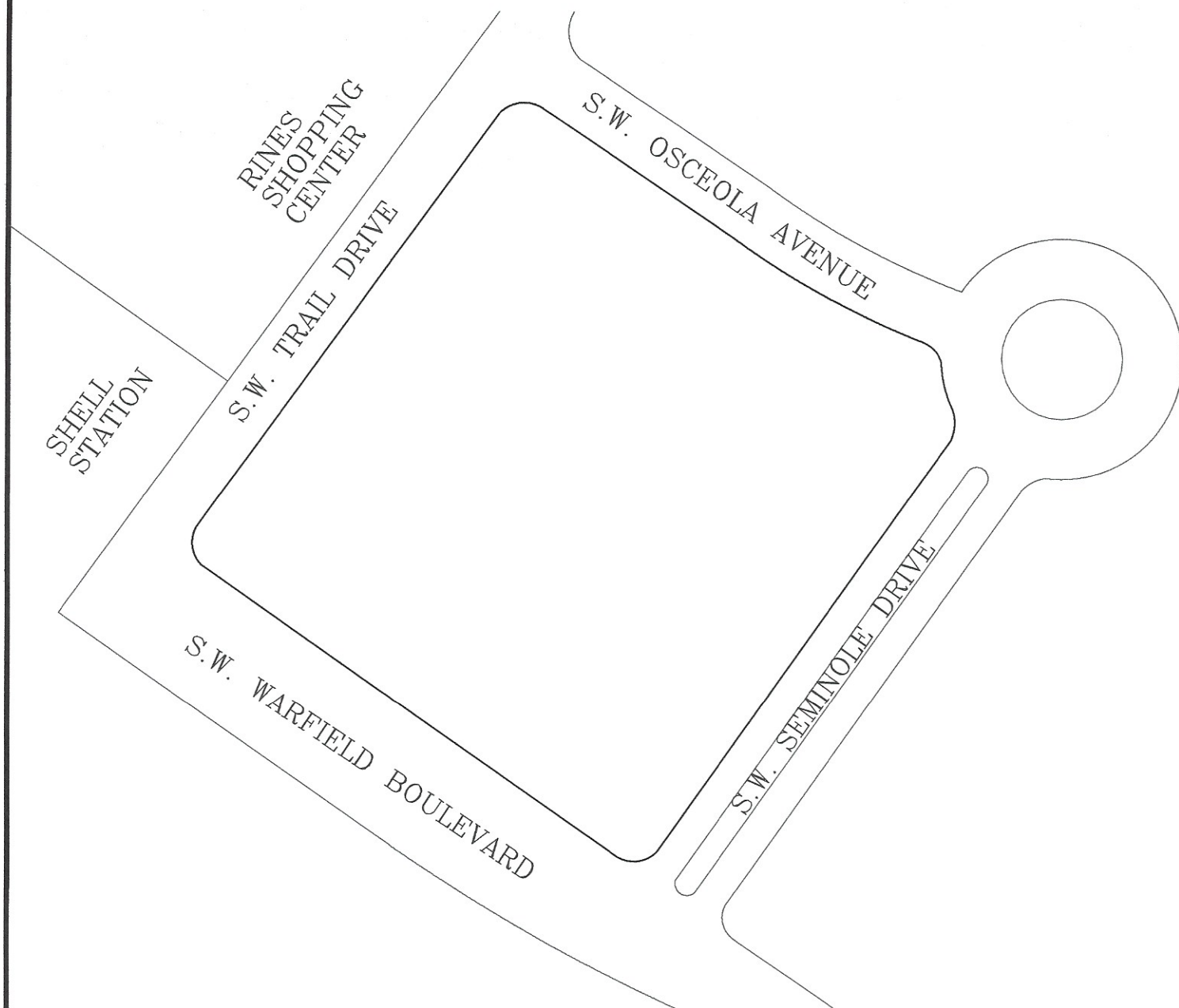
INDIANTOWN, FLORIDA

DRAWN BY: M.L. Daniels

CHECKED BY: A.F.

DATE: 2/23/2020

JOB NO.: 2235-01.01



EMPIRE
ENVIRONMENTAL, INC.

3206 S.E. Aster Ln. R-107
Stuart, Florida 34994
(772) 285-8385

FIGURE 3
SITE PLAN

S.W. WARFIELD BOULEVARD
INDIANTOWN, FLORIDA

DRAWN BY: M.L. Daniels

CHECKED BY: A.F.

DATE: 2/23/2020

SCALE: n.t.s.

JOB NO.: 2235-01.01

trailer park. Across S.W. Seminole Drive are woods, and across S.W. Warfield Boulevard are Indiantown Real Estate, a cleared parcel and a house.

2.1 Legal Description

TRACT "A" OF INDIANTOWN PARK, ACCORDING TO THE PLAT THEREOF, RECORDED IN PLAT BOOK 3, PAGE 82, MARTIN COUNTY, FLORIDA, PUBLIC RECORDS.

3.0 General Area

The general area consists of residences, a shopping center, and various businesses along SW. Warfield Boulevard.

4.0 Soil

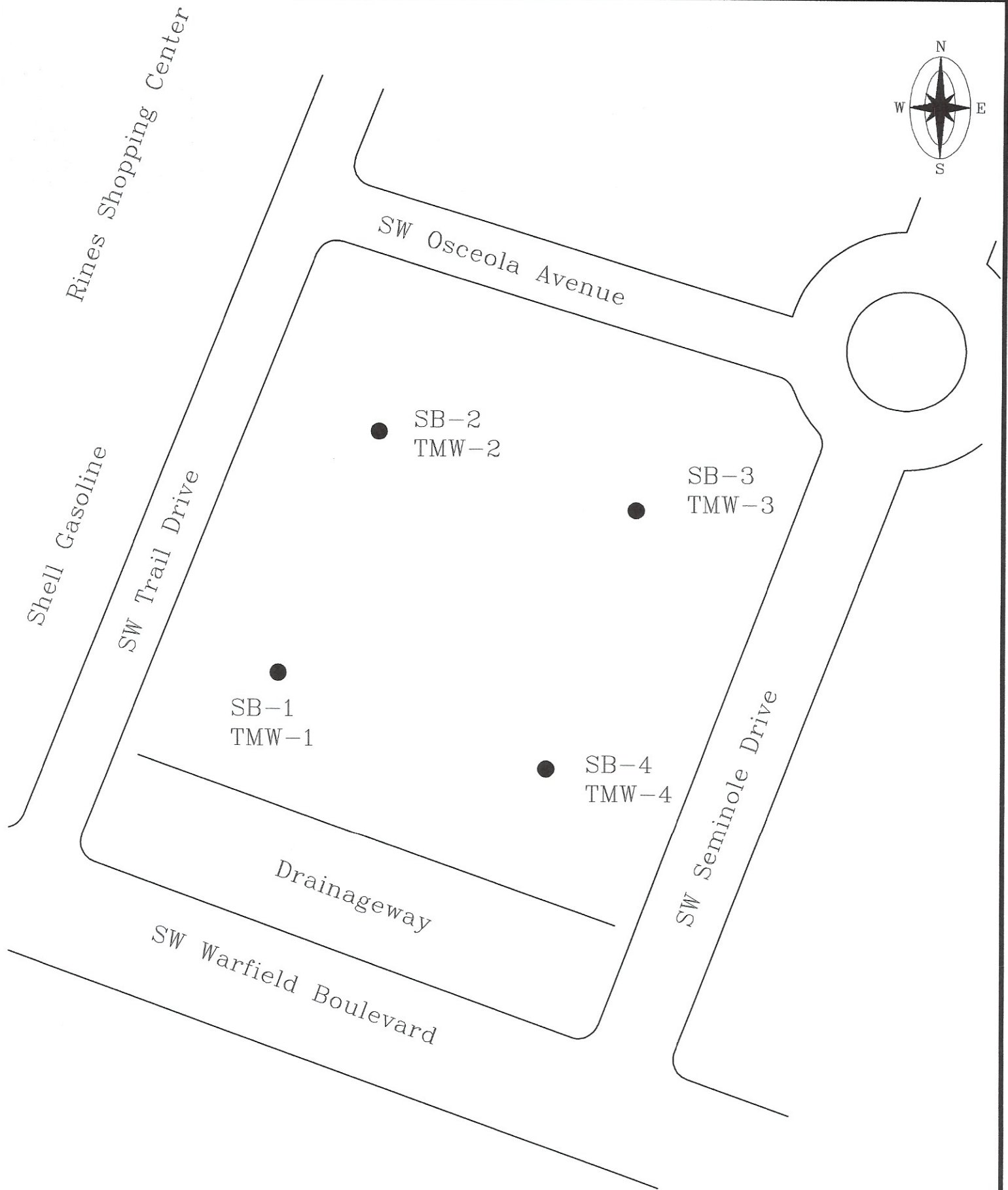
According to the U.S. Soil Conservation Service Soil Survey for Martin County (1981), the historical soils on-site consist of **Salerno sand**, a poorly drained soil characteristic of flatwoods. The water table is within a depth of ten inches for two to four months during the wet season in most years and below a depth of forty inches for one to four months in dry seasons. The internal drainage is slow and is impeded by the water table that is perched above the subsoil for long periods. Permeability is rapid to a depth of sixty-one inches and very slow to moderately slow between depths of sixty-one to seventy-six inches. The available water capacity is low in the surface layer, very low in the subsurface layer and low in the subsoil. Natural fertility and the content of organic matter are low.

5.0 Sampling Methods

5.1 Groundwater

On June 25, 2020, four temporary monitoring wells were installed in the areas shown in Figure 4.

The temporary monitoring wells were installed using a decontaminated direct push apparatus, and the wells were



EMPIRE
ENVIRONMENTAL, INC.

3206 Aster Lane
Stuart, Florida 34997
(772) 285-8385

FIGURE 4
Sampling Locations
SW Warfield Boulevard
Indiantown, Florida

DRAWN BY: M.Music
CHECKED BY: A.F.
DATE: 7/8/2020
SCALE: 1" = 100'
JOB NO.: 2235-02.01

constructed of two inch, Schedule 40 PVC casing with a screen from the water table to approximately six feet below. The water table was at five feet below ground surface. A diagram of a typical temporary monitoring well is included in Appendix A.

The wells were purged of five well volumes with a low-yield peristaltic pump. Groundwater samples were collected using the pump, placed in appropriate containers, stored in an iced cooler and transported to Palm Beach Environmental Laboratories in West Palm Beach, Florida where they were analyzed for the parameters listed in Table 1.

TABLE 1 TESTS CONDUCTED AT EACH LOCATION S.W. TRAIL DRIVE & S.W. WARFIELD BOULEVARD INDIANTOWN, FLORIDA JUNE 25, 2020		
<u>Well</u>	<u>Compounds</u>	<u>Method</u>
TMW-1 to TMW-4	Chlorinated Pesticides Arsenic	EPA Method 8081

5.2 Soil

Soil samples were collected within from the upper two feet of each well borehole (Figure 4), placed in appropriate containers, stored in an iced cooler and transported to Xenco Laboratories in Delray Beach, Florida where they were analyzed for the parameters listed in Table 1.

6.0 Results

6.1 Groundwater

No Chlorinated Pesticides were detected in groundwater. Arsenic was detected in groundwater from each location. The concentrations are shown in Table 2. They did not exceed the state of Florida Groundwater Cleanup Target Level (GCTL).

TABLE 2 COMPOUNDS DETECTED IN GROUNDWATER S.W. TRAIL DRIVE & S.W. WARFIELD BOULEVARD INDIANTOWN, FLORIDA JUNE 25, 2020 µg/l					
<u>Compound</u>	<u>TMW-1</u>	<u>TMW-2</u>	<u>TMW-3</u>	<u>TMW-4</u>	<u>State Guideline#</u>
Arsenic	1.37	2.09	0.466	0.405	10
# = FDEP Groundwater Cleanup Target Level (FAC Rule 62-777) * = micrograms per liter (µg/l)					

The laboratory data sheets are included in Appendix B.

6.2 Soil

No Chlorinated Pesticide compounds or Arsenic were detected in any soil sample.

The laboratory data sheets are included in Appendix B.

7.0 Discussion

A Phase I Environmental Site Assessment was conducted on the subject property. Anecdotal evidence indicated a plant nursery occupied the property prior to 1970. No features associated with a nursery were observed during the Phase I Environmental Site Assessment.

Four temporary monitoring wells and soil borings were installed in random areas of the Site. Soil and groundwater were collected and analyzed for long-lasting Chlorinated Pesticides and Arsenic. No compounds were detected in soil and only trace amounts of Arsenic were detected in groundwater.

8.0 Conclusions

1. Anecdotal evidence in a Phase I Environmental Site Assessment indicated a former plant nursery had occupied the Site.

3. Soil and groundwater were tested for Chlorinated Pesticides and Arsenic from four locations on the Site.
4. No compounds were detected in any of the soil samples.
5. Trace amounts of Arsenic were detected in groundwater from the four locations.
6. Based on the limited testing, there was no evidence that the Site has been impacted by activities of the former plant nursery.

9.0 Recommendations

1. No further environmental studies need to be conducted on the property.

10.0 Limitations

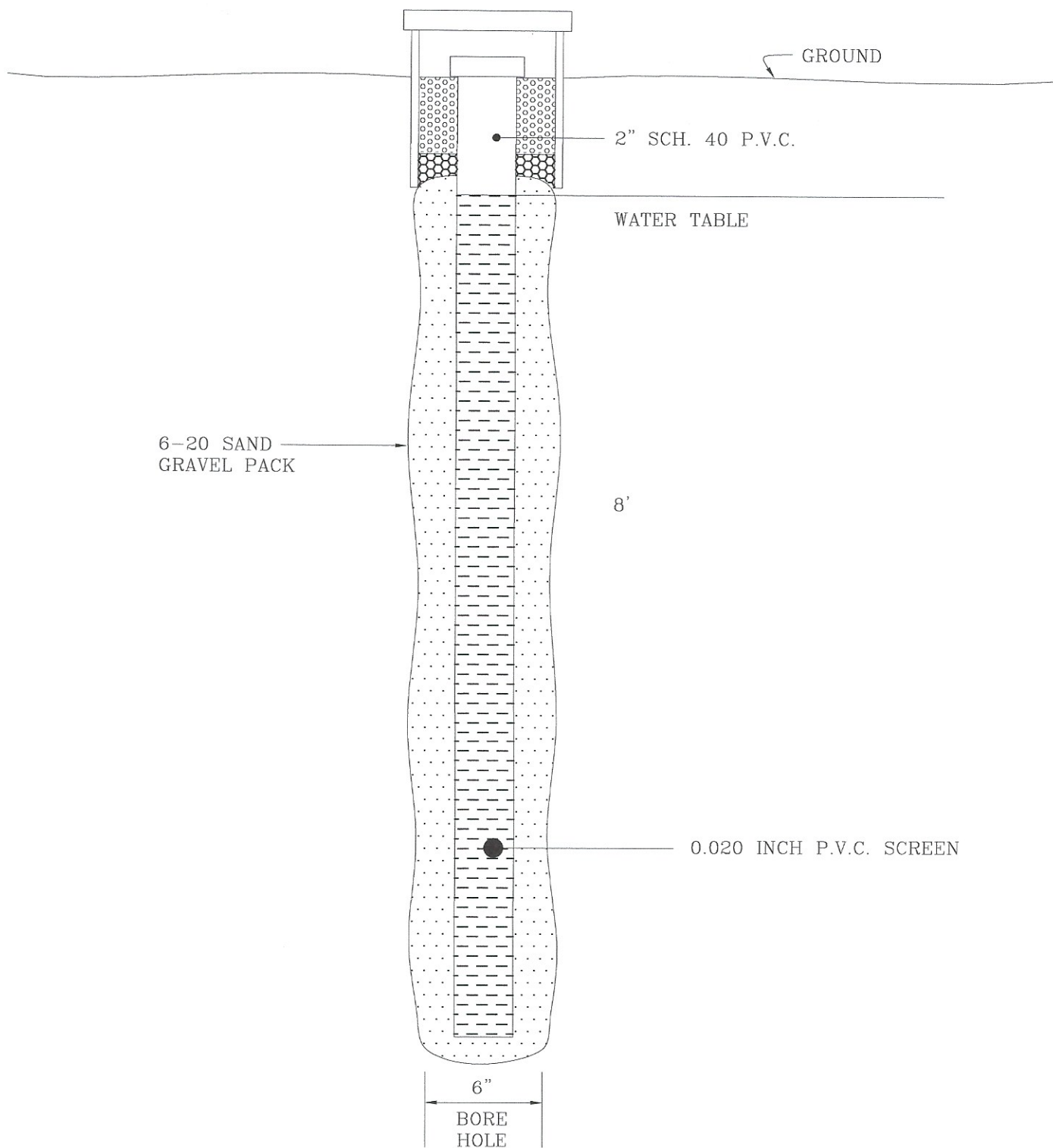
Empire Environmental, Inc. has conducted a Phase II Environmental Site Assessment on behalf of the Village of Indiantown, which may rely on this report. Reliance for other parties must be accompanied by a written request. Empire Environmental, Inc. has undertaken this assignment using their best professional effort consistent with generally accepted environmental assessment practices. Empire Environmental, Inc. conducted testing based on all information discovered during the course of a Phase I Environmental Site Assessment. Additional data subsequently provided may alter the scope of work and thus the conclusions of the Phase II Environmental Site Assessment



Andrew Feinstein, CFEA (#370), LEP (#175)

APPENDIX A

DIAGRAM OF TYPICAL TEMPORARY MONITORING WELL



EMPIRE
ENVIRONMENTAL, INC.

TYPICAL TEMPORARY MONITORING WELL

DRAWN BY: D.H.A.
CHECKED BY: A.F.
DATE: 11/2006
SCALE: N.T.S.
PLOT 1=4

APPENDIX B
LABORATORY DATA SHEETS

Analytical Report 665519

for

Empire Environmental

Project Manager: Mark Music

Indiantown

07.06.2020

Xenco Laboratories
1395 NW 17th Avenue, Suite 112A
Delray Beach, FL 33445
Ph:(561) 689-6701

Xenco-Houston (EPA Lab Code: TX00122):
Texas (T104704215-20-36), Arizona (AZ0765), Florida (E871002-33), Louisiana (03054)
Oklahoma (2019-058), North Carolina (681), Arkansas (20-035-0)

Xenco-Dallas (EPA Lab Code: TX01468):
Texas (T104704295-20-25), Arizona (AZ0809)

Xenco-El Paso (EPA Lab Code: TX00127): Texas (T104704221-20-17)
Xenco-Lubbock (EPA Lab Code: TX00139): Texas (T104704219-20-22)
Xenco-Midland (EPA Lab Code: TX00158): Texas (T104704400-19-19)
Xenco-Carlsbad (LELAP): Louisiana (05092)
Xenco-San Antonio (EPA Lab Code: TNI02385): Texas (T104704534-20-7)
Xenco Phoenix (EPA Lab Code: AZ00901): Arizona (AZ0757)
Xenco-Tampa: Florida (E87429), North Carolina (483)

07.06.2020

Project Manager: **Mark Music**
Empire Environmental
3206 SE Aster Ln, R-107

Stuart, FL 34994

Reference: Eurofins Xenco, LLC Report No(s): **665519**
Indiantown
Project Address:

Mark Music:

We are reporting to you the results of the analyses performed on the samples received under the project name referenced above and identified with the Eurofins Xenco, LLC Report Number(s) 665519. All results being reported under this Report Number apply to the samples analyzed and properly identified with a Laboratory ID number. Subcontracted analyses are identified in this report with either the NELAC certification number of the subcontract lab in the analyst ID field, or the complete subcontracted report attached to this report.

Unless otherwise noted in a Case Narrative, all data reported in this Analytical Report are in compliance with NELAC standards. The uncertainty of measurement associated with the results of analysis reported is available upon request. Should insufficient sample be provided to the laboratory to meet the method and NELAC Matrix Duplicate and Matrix Spike requirements, then the data will be analyzed, evaluated and reported using all other available quality control measures.

The validity and integrity of this report will remain intact as long as it is accompanied by this letter and reproduced in full, unless written approval is granted by Eurofins Xenco, LLC. This report will be filed for at least 5 years in our archives after which time it will be destroyed without further notice, unless otherwise arranged with you. The samples received, and described as recorded in Report No. 665519 will be filed for 45 days, and after that time they will be properly disposed without further notice, unless otherwise arranged with you. We reserve the right to return to you any unused samples, extracts or solutions related to them if we consider so necessary (e.g., samples identified as hazardous waste, sample sizes exceeding analytical standard practices, controlled substances under regulated protocols, etc).

We thank you for selecting Eurofins Xenco, LLC to serve your analytical needs. If you have any questions concerning this report, please feel free to contact us at any time.

Respectfully,



Matthew Jones
Project Manager

A Small Business and Minority Company

Houston - Dallas - Midland - Tampa - Phoenix - Lubbock - San Antonio - El Paso - Atlanta - New Mexico

Sample Cross Reference 665519**Empire Environmental, Stuart, FL**

Indiantown

Sample Id	Matrix	Date Collected	Sample Depth	Lab Sample Id
SB-1	S	06.25.2020 08:50	2.5	665519-001
MW-1	W	06.25.2020 09:15		665519-002
SB-2	S	06.25.2020 09:10	2.5	665519-003
MW-2	W	06.25.2020 09:47		665519-004
SB-3	S	06.25.2020 09:15	2.5	665519-005
MW-3	W	06.25.2020 09:40		665519-006
SB-4	S	06.25.2020 09:08	2.5	665519-007
MW-4	W	06.25.2020 09:22		665519-008

CASE NARRATIVE*Client Name: Empire Environmental**Project Name: Indiantown*

Project ID:

Work Order Number(s): 665519

Report Date: 07.06.2020

Date Received: 06.25.2020

Sample receipt non conformances and comments:

Sample receipt non conformances and comments per sample:

None

Analytical non conformances and comments:

Batch: LBA-3130073 Pesticides by SW-846 8081B

The laboratory control sample (LCS) and laboratory control sample duplicate (LCSD) associated with batch 3130073 recovered outside control limits for 4,4-DDT and Methoxychlor. The target analyte was biased high in the LCS/LCSD and was not detected in any of the associated samples; therefore, the results have been reported and qualified.

Batch: LBA-3130240 Pesticides by SW-846 8081B

Surrogate recovery for the following sample was outside control limits: 7706135-1-BSD. Evidence of matrix interference is present and the data was confirmed by re-analysis; therefore, the results have been reported and qualified.

Hits Summary 665519

Empire Environmental, Stuart, FL

Indiantown

Below is a summary of the analytes which were found to be present in the samples associated with this work order. This should only be used in conjunction with the included analytical results.

Sample ID: SB-1		Sample ID: 665519-001		Date/Time Sampled: 06.25.2020 08:50			Matrix: Solid	
Analyte Name	Method	CAS No.	Dil.	Result	RL/PQL	MDL	Units	Qual
Percent Moisture	SM2540G	MOIST	1	10.3			%	
Sample ID: MW-1		Sample ID: 665519-002		Date/Time Sampled: 06.25.2020 09:15			Matrix: Water	
Analyte Name	Method	CAS No.	Dil.	Result	RL/PQL	MDL	Units	Qual
Arsenic	SW6020A	7440-38-2	1	0.00137	0.00400	0.000246	mg/L	I
Sample ID: SB-2		Sample ID: 665519-003		Date/Time Sampled: 06.25.2020 09:10			Matrix: Solid	
Analyte Name	Method	CAS No.	Dil.	Result	RL/PQL	MDL	Units	Qual
Percent Moisture	SM2540G	MOIST	1	13.4			%	
Sample ID: MW-2		Sample ID: 665519-004		Date/Time Sampled: 06.25.2020 09:47			Matrix: Water	
Analyte Name	Method	CAS No.	Dil.	Result	RL/PQL	MDL	Units	Qual
Arsenic	SW6020A	7440-38-2	1	0.00209	0.00400	0.000246	mg/L	I
Sample ID: SB-3		Sample ID: 665519-005		Date/Time Sampled: 06.25.2020 09:15			Matrix: Solid	
Analyte Name	Method	CAS No.	Dil.	Result	RL/PQL	MDL	Units	Qual
Percent Moisture	SM2540G	MOIST	1	10.6			%	
Sample ID: MW-3		Sample ID: 665519-006		Date/Time Sampled: 06.25.2020 09:40			Matrix: Water	
Analyte Name	Method	CAS No.	Dil.	Result	RL/PQL	MDL	Units	Qual
Arsenic	SW6020A	7440-38-2	1	0.000466	0.00400	0.000246	mg/L	I
Sample ID: SB-4		Sample ID: 665519-007		Date/Time Sampled: 06.25.2020 09:08			Matrix: Solid	
Analyte Name	Method	CAS No.	Dil.	Result	RL/PQL	MDL	Units	Qual
Percent Moisture	SM2540G	MOIST	1	15.3			%	
Sample ID: MW-4		Sample ID: 665519-008		Date/Time Sampled: 06.25.2020 09:22			Matrix: Water	
Analyte Name	Method	CAS No.	Dil.	Result	RL/PQL	MDL	Units	Qual
Arsenic	SW6020A	7440-38-2	1	0.000405	0.00400	0.000246	mg/L	I

Certificate of Analytical Results 665519

Empire Environmental, Stuart, FL Indiantown

Sample Id: **SB-1** Matrix: Soil Date Received: 06.25.2020 12:10
 Lab Sample Id: 665519-001 Date Collected: 06.25.2020 08:50 Sample Depth: 2.5
 Analytical Method: Arsenic By SW6020A Prep Method: SW3051
 Tech: PJB % Moisture: 10.27
 Analyst: DEP Date Prep: 06.30.2020 09:20 Basis: Dry Weight
 Seq Number: 3130381 SUB: E871002

Parameter	Cas Number	Result	PQL	MDL	Flag	Units	Analysis Date	Dil
Arsenic	7440-38-2	0.573 U	3.71	0.573	U	mg/kg	06.30.2020 17:25	10

Analytical Method: Pesticides by SW-846 8081B Prep Method: SW3550
 Tech: JUN % Moisture: 10.27
 Analyst: CEC Date Prep: 06.25.2020 13:54 Basis: Dry Weight
 Seq Number: 3130240 SUB: E871002

Parameter	Cas Number	Result	PQL	MDL	Flag	Units	Analysis Date	Dil
4,4-DDD	72-54-8	0.000859 U	0.00371	0.000859	U	mg/kg	06.29.2020 12:03	1
4,4-DDE	72-55-9	0.000927 U	0.00371	0.000927	U	mg/kg	06.29.2020 12:03	1
4,4-DDT	50-29-3	0.000283 U	0.00371	0.000283	U	mg/kg	06.29.2020 12:03	1
Aldrin	309-00-2	0.000404 U	0.00371	0.000404	U	mg/kg	06.29.2020 12:03	1
Alpha-BHC	319-84-6	0.000757 U	0.00371	0.000757	U	mg/kg	06.29.2020 12:03	1
Alpha-Chlordane	5103-71-9	0.000635 U	0.00371	0.000635	U	mg/kg	06.29.2020 12:03	1
Beta-BHC	319-85-7	0.000527 U	0.00371	0.000527	U	mg/kg	06.29.2020 12:03	1
Delta-BHC	319-86-8	0.000927 U	0.00371	0.000927	U	mg/kg	06.29.2020 12:03	1
Dieldrin	60-57-1	0.000189 U	0.00371	0.000189	U	mg/kg	06.29.2020 12:03	1
Endosulfan I	959-98-8	0.000225 U	0.00371	0.000225	U	mg/kg	06.29.2020 12:03	1
Endosulfan II	33213-65-9	0.000414 U	0.00371	0.000414	U	mg/kg	06.29.2020 12:03	1
Endosulfan Sulfate	1031-07-8	0.000307 U	0.00371	0.000307	U	mg/kg	06.29.2020 12:03	1
Endrin	72-20-8	0.000324 U	0.00371	0.000324	U	mg/kg	06.29.2020 12:03	1
Endrin Aldehyde	7421-93-4	0.000275 U	0.00371	0.000275	U	mg/kg	06.29.2020 12:03	1
Endrin Ketone	53494-70-5	0.000402 U	0.00371	0.000402	U	mg/kg	06.29.2020 12:03	1
Gamma-BHC (Lindane)	58-89-9	0.000488 U	0.00371	0.000488	U	mg/kg	06.29.2020 12:03	1
Gamma-Chlordane	5103-74-2	0.000850 U	0.00371	0.000850	U	mg/kg	06.29.2020 12:03	1
Heptachlor	76-44-8	0.000626 U	0.00371	0.000626	U	mg/kg	06.29.2020 12:03	1
Heptachlor Epoxide	1024-57-3	0.000272 U	0.00371	0.000272	U	mg/kg	06.29.2020 12:03	1
Methoxychlor	72-43-5	0.000564 U	0.00371	0.000564	U	mg/kg	06.29.2020 12:03	1
Chlordane	12789-03-6	0.0266 U	0.0927	0.0266	U	mg/kg	06.29.2020 12:03	1
Toxaphene	8001-35-2	0.0126 U	0.0927	0.0126	U	mg/kg	06.29.2020 12:03	1

Surrogate	Cas Number	% Recovery	Units	Limits	Analysis Date	Flag
Tetrachloro-m-xylene	877-09-8	39	%	35-135	06.29.2020 12:03	
Decachlorobiphenyl	2051-24-3	58	%	25-143	06.29.2020 12:03	

Certificate of Analytical Results 665519

Empire Environmental, Stuart, FL Indiantown

Sample Id: MW-1
Lab Sample Id: 665519-002

Matrix: Ground Water
Date Collected: 06.25.2020 09:15

Date Received: 06.25.2020 12:10

Analytical Method: Arsenic By SW6020A

Prep Method: SW3010A

Tech: MLI

% Moisture:

Analyst: DEP

Date Prep: 07.01.2020 08:35

Seq Number: 3130707

SUB: E871002

Parameter	Cas Number	Result	PQL	MDL	Flag	Units	Analysis Date	Dil
Arsenic	7440-38-2	0.00137	0.00400	0.000246	I	mg/L	07.02.2020 16:45	1

Analytical Method: Pesticides by SW-846 8081B

Prep Method: SW3510C

Tech: MGZ

% Moisture:

Analyst: CEC

Date Prep: 06.26.2020 11:42

Seq Number: 3130073

SUB: E871002

Parameter	Cas Number	Result	PQL	MDL	Flag	Units	Analysis Date	Dil
4,4-DDD	72-54-8	0.00407 U	0.100	0.00407	U	ug/L	06.26.2020 16:13	1
4,4-DDE	72-55-9	0.00547 U	0.100	0.00547	U	ug/L	06.26.2020 16:13	1
4,4-DDT	50-29-3	0.0189 U	0.100	0.0189	UJ	ug/L	06.26.2020 16:13	1
Aldrin	309-00-2	0.00567 U	0.100	0.00567	U	ug/L	06.26.2020 16:13	1
Alpha-BHC	319-84-6	0.00711 U	0.100	0.00711	U	ug/L	06.26.2020 16:13	1
Alpha-Chlordane	5103-71-9	0.00904 U	0.100	0.00904	U	ug/L	06.26.2020 16:13	1
Beta-BHC	319-85-7	0.0194 U	0.100	0.0194	U	ug/L	06.26.2020 16:13	1
Delta-BHC	319-86-8	0.0123 U	0.100	0.0123	U	ug/L	06.26.2020 16:13	1
Dieldrin	60-57-1	0.00477 U	0.100	0.00477	U	ug/L	06.26.2020 16:13	1
Endosulfan I	959-98-8	0.00536 U	0.100	0.00536	U	ug/L	06.26.2020 16:13	1
Endosulfan II	33213-65-9	0.00609 U	0.100	0.00609	U	ug/L	06.26.2020 16:13	1
Endosulfan Sulfate	1031-07-8	0.00559 U	0.100	0.00559	U	ug/L	06.26.2020 16:13	1
Endrin	72-20-8	0.00779 U	0.100	0.00779	U	ug/L	06.26.2020 16:13	1
Endrin Aldehyde	7421-93-4	0.00592 U	0.100	0.00592	U	ug/L	06.26.2020 16:13	1
Endrin Ketone	53494-70-5	0.0100 U	0.100	0.0100	U	ug/L	06.26.2020 16:13	1
Gamma-BHC (Lindane)	58-89-9	0.0150 U	0.100	0.0150	U	ug/L	06.26.2020 16:13	1
Gamma-Chlordane	5103-74-2	0.0144 U	0.100	0.0144	U	ug/L	06.26.2020 16:13	1
Heptachlor	76-44-8	0.0223 U	0.100	0.0223	U	ug/L	06.26.2020 16:13	1
Heptachlor Epoxide	1024-57-3	0.00672 U	0.100	0.00672	U	ug/L	06.26.2020 16:13	1
Methoxychlor	72-43-5	0.0195 U	0.100	0.0195	UJ	ug/L	06.26.2020 16:13	1
Chlordane	12789-03-6	0.516 U	2.50	0.516	U	ug/L	06.26.2020 16:13	1
Toxaphene	8001-35-2	0.385 U	2.50	0.385	U	ug/L	06.26.2020 16:13	1

Surrogate	Cas Number	% Recovery	Units	Limits	Analysis Date	Flag
Tetrachloro-m-xylene	877-09-8	30	%	18-126	06.26.2020 16:13	
Decachlorobiphenyl	2051-24-3	44	%	15-136	06.26.2020 16:13	

Certificate of Analytical Results 665519

Empire Environmental, Stuart, FL Indiantown

Sample Id: **SB-2**
Lab Sample Id: 665519-003

Matrix: Soil
Date Collected: 06.25.2020 09:10

Date Received: 06.25.2020 12:10
Sample Depth: 2.5

Analytical Method: Arsenic By SW6020A

Tech: PJB

Analyst: DEP

Seq Number: 3130381

Date Prep: 06.30.2020 09:20

Prep Method: SW3051

% Moisture: 13.36

Basis: Dry Weight

SUB: E871002

Parameter	Cas Number	Result	PQL	MDL	Flag	Units	Analysis Date	Dil
Arsenic	7440-38-2	0.685 U	4.44	0.685	U	mg/kg	06.30.2020 17:28	10

Analytical Method: Pesticides by SW-846 8081B

Tech: JUN

Analyst: CEC

Seq Number: 3130240

Date Prep: 06.25.2020 13:57

Prep Method: SW3550

% Moisture: 13.36

Basis: Dry Weight

SUB: E871002

Parameter	Cas Number	Result	PQL	MDL	Flag	Units	Analysis Date	Dil
4,4-DDD	72-54-8	0.000890 U	0.00384	0.000890	U	mg/kg	06.29.2020 12:17	1
4,4-DDE	72-55-9	0.000961 U	0.00384	0.000961	U	mg/kg	06.29.2020 12:17	1
4,4-DDT	50-29-3	0.000293 U	0.00384	0.000293	U	mg/kg	06.29.2020 12:17	1
Aldrin	309-00-2	0.000418 U	0.00384	0.000418	U	mg/kg	06.29.2020 12:17	1
Alpha-BHC	319-84-6	0.000784 U	0.00384	0.000784	U	mg/kg	06.29.2020 12:17	1
Alpha-Chlordane	5103-71-9	0.000658 U	0.00384	0.000658	U	mg/kg	06.29.2020 12:17	1
Beta-BHC	319-85-7	0.000546 U	0.00384	0.000546	U	mg/kg	06.29.2020 12:17	1
Delta-BHC	319-86-8	0.000961 U	0.00384	0.000961	U	mg/kg	06.29.2020 12:17	1
Dieldrin	60-57-1	0.000195 U	0.00384	0.000195	U	mg/kg	06.29.2020 12:17	1
Endosulfan I	959-98-8	0.000233 U	0.00384	0.000233	U	mg/kg	06.29.2020 12:17	1
Endosulfan II	33213-65-9	0.000429 U	0.00384	0.000429	U	mg/kg	06.29.2020 12:17	1
Endosulfan Sulfate	1031-07-8	0.000318 U	0.00384	0.000318	U	mg/kg	06.29.2020 12:17	1
Endrin	72-20-8	0.000335 U	0.00384	0.000335	U	mg/kg	06.29.2020 12:17	1
Endrin Aldehyde	7421-93-4	0.000285 U	0.00384	0.000285	U	mg/kg	06.29.2020 12:17	1
Endrin Ketone	53494-70-5	0.000416 U	0.00384	0.000416	U	mg/kg	06.29.2020 12:17	1
Gamma-BHC (Lindane)	58-89-9	0.000506 U	0.00384	0.000506	U	mg/kg	06.29.2020 12:17	1
Gamma-Chlordane	5103-74-2	0.000880 U	0.00384	0.000880	U	mg/kg	06.29.2020 12:17	1
Heptachlor	76-44-8	0.000648 U	0.00384	0.000648	U	mg/kg	06.29.2020 12:17	1
Heptachlor Epoxide	1024-57-3	0.000282 U	0.00384	0.000282	U	mg/kg	06.29.2020 12:17	1
Methoxychlor	72-43-5	0.000584 U	0.00384	0.000584	U	mg/kg	06.29.2020 12:17	1
Chlordane	12789-03-6	0.0276 U	0.0961	0.0276	U	mg/kg	06.29.2020 12:17	1
Toxaphene	8001-35-2	0.0131 U	0.0961	0.0131	U	mg/kg	06.29.2020 12:17	1

Surrogate	Cas Number	% Recovery	Units	Limits	Analysis Date	Flag
Tetrachloro-m-xylene	877-09-8	53	%	35-135	06.29.2020 12:17	
Decachlorobiphenyl	2051-24-3	56	%	25-143	06.29.2020 12:17	

Certificate of Analytical Results 665519

Empire Environmental, Stuart, FL Indiantown

Sample Id: **MW-2**
Lab Sample Id: 665519-004

Matrix: Ground Water
Date Collected: 06.25.2020 09:47

Date Received: 06.25.2020 12:10

Analytical Method: Arsenic By SW6020A

Prep Method: SW3010A

Tech: MLI

% Moisture:

Analyst: DEP

Date Prep: 07.01.2020 08:35

Seq Number: 3130707

SUB: E871002

Parameter	Cas Number	Result	PQL	MDL	Flag	Units	Analysis Date	Dil
Arsenic	7440-38-2	0.00209	0.00400	0.000246	I	mg/L	07.02.2020 16:48	1

Analytical Method: Pesticides by SW-846 8081B

Prep Method: SW3510C

Tech: MGZ

% Moisture:

Analyst: CEC

Date Prep: 06.26.2020 11:45

Seq Number: 3130073

SUB: E871002

Parameter	Cas Number	Result	PQL	MDL	Flag	Units	Analysis Date	Dil
4,4-DDD	72-54-8	0.00407 U	0.100	0.00407	U	ug/L	06.26.2020 16:27	1
4,4-DDE	72-55-9	0.00547 U	0.100	0.00547	U	ug/L	06.26.2020 16:27	1
4,4-DDT	50-29-3	0.0189 U	0.100	0.0189	UJ	ug/L	06.26.2020 16:27	1
Aldrin	309-00-2	0.00567 U	0.100	0.00567	U	ug/L	06.26.2020 16:27	1
Alpha-BHC	319-84-6	0.00711 U	0.100	0.00711	U	ug/L	06.26.2020 16:27	1
Alpha-Chlordane	5103-71-9	0.00904 U	0.100	0.00904	U	ug/L	06.26.2020 16:27	1
Beta-BHC	319-85-7	0.0194 U	0.100	0.0194	U	ug/L	06.26.2020 16:27	1
Delta-BHC	319-86-8	0.0123 U	0.100	0.0123	U	ug/L	06.26.2020 16:27	1
Dieldrin	60-57-1	0.00477 U	0.100	0.00477	U	ug/L	06.26.2020 16:27	1
Endosulfan I	959-98-8	0.00536 U	0.100	0.00536	U	ug/L	06.26.2020 16:27	1
Endosulfan II	33213-65-9	0.00609 U	0.100	0.00609	U	ug/L	06.26.2020 16:27	1
Endosulfan Sulfate	1031-07-8	0.00559 U	0.100	0.00559	U	ug/L	06.26.2020 16:27	1
Endrin	72-20-8	0.00779 U	0.100	0.00779	U	ug/L	06.26.2020 16:27	1
Endrin Aldehyde	7421-93-4	0.00592 U	0.100	0.00592	U	ug/L	06.26.2020 16:27	1
Endrin Ketone	53494-70-5	0.0100 U	0.100	0.0100	U	ug/L	06.26.2020 16:27	1
Gamma-BHC (Lindane)	58-89-9	0.0150 U	0.100	0.0150	U	ug/L	06.26.2020 16:27	1
Gamma-Chlordane	5103-74-2	0.0144 U	0.100	0.0144	U	ug/L	06.26.2020 16:27	1
Heptachlor	76-44-8	0.0223 U	0.100	0.0223	U	ug/L	06.26.2020 16:27	1
Heptachlor Epoxide	1024-57-3	0.00672 U	0.100	0.00672	U	ug/L	06.26.2020 16:27	1
Methoxychlor	72-43-5	0.0195 U	0.100	0.0195	UJ	ug/L	06.26.2020 16:27	1
Chlordane	12789-03-6	0.516 U	2.50	0.516	U	ug/L	06.26.2020 16:27	1
Toxaphene	8001-35-2	0.385 U	2.50	0.385	U	ug/L	06.26.2020 16:27	1

Surrogate	Cas Number	% Recovery	Units	Limits	Analysis Date	Flag
Tetrachloro-m-xylene	877-09-8	35	%	18-126	06.26.2020 16:27	
Decachlorobiphenyl	2051-24-3	33	%	15-136	06.26.2020 16:27	

Certificate of Analytical Results 665519

Empire Environmental, Stuart, FL Indiantown

Sample Id: **SB-3** Matrix: Soil Date Received: 06.25.2020 12:10
 Lab Sample Id: 665519-005 Date Collected: 06.25.2020 09:15 Sample Depth: 2.5
 Analytical Method: Arsenic By SW6020A Prep Method: SW3051
 Tech: PJB % Moisture: 10.62
 Analyst: DEP Date Prep: 06.30.2020 09:20 Basis: Dry Weight
 Seq Number: 3130381 SUB: E871002

Parameter	Cas Number	Result	PQL	MDL	Flag	Units	Analysis Date	Dil
Arsenic	7440-38-2	0.616 U	4.00	0.616	U	mg/kg	06.30.2020 17:31	10

Analytical Method: Pesticides by SW-846 8081B Prep Method: SW3550
 Tech: JUN % Moisture: 10.62
 Analyst: CEC Date Prep: 06.25.2020 14:00 Basis: Dry Weight
 Seq Number: 3130240 SUB: E871002

Parameter	Cas Number	Result	PQL	MDL	Flag	Units	Analysis Date	Dil
4,4-DDD	72-54-8	0.000862 U	0.00373	0.000862	U	mg/kg	06.29.2020 12:31	1
4,4-DDE	72-55-9	0.000931 U	0.00373	0.000931	U	mg/kg	06.29.2020 12:31	1
4,4-DDT	50-29-3	0.000284 U	0.00373	0.000284	U	mg/kg	06.29.2020 12:31	1
Aldrin	309-00-2	0.000405 U	0.00373	0.000405	U	mg/kg	06.29.2020 12:31	1
Alpha-BHC	319-84-6	0.000760 U	0.00373	0.000760	U	mg/kg	06.29.2020 12:31	1
Alpha-Chlordane	5103-71-9	0.000638 U	0.00373	0.000638	U	mg/kg	06.29.2020 12:31	1
Beta-BHC	319-85-7	0.000529 U	0.00373	0.000529	U	mg/kg	06.29.2020 12:31	1
Delta-BHC	319-86-8	0.000931 U	0.00373	0.000931	U	mg/kg	06.29.2020 12:31	1
Dieldrin	60-57-1	0.000189 U	0.00373	0.000189	U	mg/kg	06.29.2020 12:31	1
Endosulfan I	959-98-8	0.000226 U	0.00373	0.000226	U	mg/kg	06.29.2020 12:31	1
Endosulfan II	33213-65-9	0.000416 U	0.00373	0.000416	U	mg/kg	06.29.2020 12:31	1
Endosulfan Sulfate	1031-07-8	0.000308 U	0.00373	0.000308	U	mg/kg	06.29.2020 12:31	1
Endrin	72-20-8	0.000325 U	0.00373	0.000325	U	mg/kg	06.29.2020 12:31	1
Endrin Aldehyde	7421-93-4	0.000276 U	0.00373	0.000276	U	mg/kg	06.29.2020 12:31	1
Endrin Ketone	53494-70-5	0.000403 U	0.00373	0.000403	U	mg/kg	06.29.2020 12:31	1
Gamma-BHC (Lindane)	58-89-9	0.000490 U	0.00373	0.000490	U	mg/kg	06.29.2020 12:31	1
Gamma-Chlordane	5103-74-2	0.000853 U	0.00373	0.000853	U	mg/kg	06.29.2020 12:31	1
Heptachlor	76-44-8	0.000628 U	0.00373	0.000628	U	mg/kg	06.29.2020 12:31	1
Heptachlor Epoxide	1024-57-3	0.000274 U	0.00373	0.000274	U	mg/kg	06.29.2020 12:31	1
Methoxychlor	72-43-5	0.000566 U	0.00373	0.000566	U	mg/kg	06.29.2020 12:31	1
Chlordane	12789-03-6	0.0267 U	0.0931	0.0267	U	mg/kg	06.29.2020 12:31	1
Toxaphene	8001-35-2	0.0127 U	0.0931	0.0127	U	mg/kg	06.29.2020 12:31	1

Surrogate	Cas Number	% Recovery	Units	Limits	Analysis Date	Flag
Tetrachloro-m-xylene	877-09-8	41	%	35-135	06.29.2020 12:31	
Decachlorobiphenyl	2051-24-3	54	%	25-143	06.29.2020 12:31	

Certificate of Analytical Results 665519

Empire Environmental, Stuart, FL Indiantown

Sample Id: **MW-3** Matrix: Ground Water Date Received: 06.25.2020 12:10
 Lab Sample Id: 665519-006 Date Collected: 06.25.2020 09:40
 Analytical Method: Arsenic By SW6020A Prep Method: SW3010A
 Tech: MLI % Moisture:
 Analyst: DEP Date Prep: 07.01.2020 08:35
 Seq Number: 3130707 SUB: E871002

Parameter	Cas Number	Result	PQL	MDL	Flag	Units	Analysis Date	Dil
Arsenic	7440-38-2	0.000466	0.00400	0.000246	I	mg/L	07.02.2020 16:51	1

Analytical Method: Pesticides by SW-846 8081B Prep Method: SW3510C
 Tech: MGZ % Moisture:
 Analyst: CEC Date Prep: 06.26.2020 11:48
 Seq Number: 3130073 SUB: E871002

Parameter	Cas Number	Result	PQL	MDL	Flag	Units	Analysis Date	Dil
4,4-DDD	72-54-8	0.00407 U	0.100	0.00407	U	ug/L	06.26.2020 16:40	1
4,4-DDE	72-55-9	0.00547 U	0.100	0.00547	U	ug/L	06.26.2020 16:40	1
4,4-DDT	50-29-3	0.0189 U	0.100	0.0189	UJ	ug/L	06.26.2020 16:40	1
Aldrin	309-00-2	0.00567 U	0.100	0.00567	U	ug/L	06.26.2020 16:40	1
Alpha-BHC	319-84-6	0.00711 U	0.100	0.00711	U	ug/L	06.26.2020 16:40	1
Alpha-Chlordane	5103-71-9	0.00904 U	0.100	0.00904	U	ug/L	06.26.2020 16:40	1
Beta-BHC	319-85-7	0.0194 U	0.100	0.0194	U	ug/L	06.26.2020 16:40	1
Delta-BHC	319-86-8	0.0123 U	0.100	0.0123	U	ug/L	06.26.2020 16:40	1
Dieldrin	60-57-1	0.00477 U	0.100	0.00477	U	ug/L	06.26.2020 16:40	1
Endosulfan I	959-98-8	0.00536 U	0.100	0.00536	U	ug/L	06.26.2020 16:40	1
Endosulfan II	33213-65-9	0.00609 U	0.100	0.00609	U	ug/L	06.26.2020 16:40	1
Endosulfan Sulfate	1031-07-8	0.00559 U	0.100	0.00559	U	ug/L	06.26.2020 16:40	1
Endrin	72-20-8	0.00779 U	0.100	0.00779	U	ug/L	06.26.2020 16:40	1
Endrin Aldehyde	7421-93-4	0.00592 U	0.100	0.00592	U	ug/L	06.26.2020 16:40	1
Endrin Ketone	53494-70-5	0.0100 U	0.100	0.0100	U	ug/L	06.26.2020 16:40	1
Gamma-BHC (Lindane)	58-89-9	0.0150 U	0.100	0.0150	U	ug/L	06.26.2020 16:40	1
Gamma-Chlordane	5103-74-2	0.0144 U	0.100	0.0144	U	ug/L	06.26.2020 16:40	1
Heptachlor	76-44-8	0.0223 U	0.100	0.0223	U	ug/L	06.26.2020 16:40	1
Heptachlor Epoxide	1024-57-3	0.00672 U	0.100	0.00672	U	ug/L	06.26.2020 16:40	1
Methoxychlor	72-43-5	0.0195 U	0.100	0.0195	UJ	ug/L	06.26.2020 16:40	1
Chlordane	12789-03-6	0.516 U	2.50	0.516	U	ug/L	06.26.2020 16:40	1
Toxaphene	8001-35-2	0.385 U	2.50	0.385	U	ug/L	06.26.2020 16:40	1

Surrogate	Cas Number	% Recovery	Units	Limits	Analysis Date	Flag
Tetrachloro-m-xylene	877-09-8	41	%	18-126	06.26.2020 16:40	
Decachlorobiphenyl	2051-24-3	53	%	15-136	06.26.2020 16:40	

Certificate of Analytical Results 665519

Empire Environmental, Stuart, FL Indiantown

Sample Id: **SB-4**
Lab Sample Id: 665519-007

Matrix: Soil
Date Collected: 06.25.2020 09:08

Date Received: 06.25.2020 12:10
Sample Depth: 2.5

Analytical Method: Arsenic By SW6020A

Tech: PJB

Analyst: DEP

Seq Number: 3130381

Date Prep: 06.30.2020 09:20

Prep Method: SW3051

% Moisture: 15.3

Basis: Dry Weight

SUB: E871002

Parameter	Cas Number	Result	PQL	MDL	Flag	Units	Analysis Date	Dil
Arsenic	7440-38-2	0.628 U	4.07	0.628	U	mg/kg	06.30.2020 17:34	10

Analytical Method: Pesticides by SW-846 8081B

Tech: JUN

Analyst: CEC

Seq Number: 3130240

Date Prep: 06.25.2020 14:03

Prep Method: SW3550

% Moisture: 15.3

Basis: Dry Weight

SUB: E871002

Parameter	Cas Number	Result	PQL	MDL	Flag	Units	Analysis Date	Dil
4,4-DDD	72-54-8	0.000912 U	0.00394	0.000912	U	mg/kg	06.29.2020 12:45	1
4,4-DDE	72-55-9	0.000985 U	0.00394	0.000985	U	mg/kg	06.29.2020 12:45	1
4,4-DDT	50-29-3	0.000300 U	0.00394	0.000300	U	mg/kg	06.29.2020 12:45	1
Aldrin	309-00-2	0.000429 U	0.00394	0.000429	U	mg/kg	06.29.2020 12:45	1
Alpha-BHC	319-84-6	0.000804 U	0.00394	0.000804	U	mg/kg	06.29.2020 12:45	1
Alpha-Chlordane	5103-71-9	0.000674 U	0.00394	0.000674	U	mg/kg	06.29.2020 12:45	1
Beta-BHC	319-85-7	0.000560 U	0.00394	0.000560	U	mg/kg	06.29.2020 12:45	1
Delta-BHC	319-86-8	0.000985 U	0.00394	0.000985	U	mg/kg	06.29.2020 12:45	1
Dieldrin	60-57-1	0.000200 U	0.00394	0.000200	U	mg/kg	06.29.2020 12:45	1
Endosulfan I	959-98-8	0.000239 U	0.00394	0.000239	U	mg/kg	06.29.2020 12:45	1
Endosulfan II	33213-65-9	0.000440 U	0.00394	0.000440	U	mg/kg	06.29.2020 12:45	1
Endosulfan Sulfate	1031-07-8	0.000326 U	0.00394	0.000326	U	mg/kg	06.29.2020 12:45	1
Endrin	72-20-8	0.000344 U	0.00394	0.000344	U	mg/kg	06.29.2020 12:45	1
Endrin Aldehyde	7421-93-4	0.000292 U	0.00394	0.000292	U	mg/kg	06.29.2020 12:45	1
Endrin Ketone	53494-70-5	0.000426 U	0.00394	0.000426	U	mg/kg	06.29.2020 12:45	1
Gamma-BHC (Lindane)	58-89-9	0.000518 U	0.00394	0.000518	U	mg/kg	06.29.2020 12:45	1
Gamma-Chlordane	5103-74-2	0.000902 U	0.00394	0.000902	U	mg/kg	06.29.2020 12:45	1
Heptachlor	76-44-8	0.000664 U	0.00394	0.000664	U	mg/kg	06.29.2020 12:45	1
Heptachlor Epoxide	1024-57-3	0.000289 U	0.00394	0.000289	U	mg/kg	06.29.2020 12:45	1
Methoxychlor	72-43-5	0.000599 U	0.00394	0.000599	U	mg/kg	06.29.2020 12:45	1
Chlordane	12789-03-6	0.0282 U	0.0985	0.0282	U	mg/kg	06.29.2020 12:45	1
Toxaphene	8001-35-2	0.0134 U	0.0985	0.0134	U	mg/kg	06.29.2020 12:45	1

Surrogate	Cas Number	% Recovery	Units	Limits	Analysis Date	Flag
Tetrachloro-m-xylene	877-09-8	50	%	35-135	06.29.2020 12:45	
Decachlorobiphenyl	2051-24-3	56	%	25-143	06.29.2020 12:45	

Certificate of Analytical Results 665519

Empire Environmental, Stuart, FL Indiantown

Sample Id: **MW-4**
Lab Sample Id: 665519-008

Matrix: Ground Water
Date Collected: 06.25.2020 09:22

Date Received: 06.25.2020 12:10

Analytical Method: Arsenic By SW6020A

Prep Method: SW3010A

Tech: MLI

% Moisture:

Analyst: DEP

Date Prep: 07.01.2020 08:35

Seq Number: 3130707

SUB: E871002

Parameter	Cas Number	Result	PQL	MDL	Flag	Units	Analysis Date	Dil
Arsenic	7440-38-2	0.000405	0.00400	0.000246	I	mg/L	07.02.2020 16:54	1

Analytical Method: Pesticides by SW-846 8081B

Prep Method: SW3510C

Tech: MGZ

% Moisture:

Analyst: CEC

Date Prep: 06.26.2020 11:51

Seq Number: 3130073

SUB: E871002

Parameter	Cas Number	Result	PQL	MDL	Flag	Units	Analysis Date	Dil
4,4-DDD	72-54-8	0.00407 U	0.100	0.00407	U	ug/L	06.26.2020 16:54	1
4,4-DDE	72-55-9	0.00547 U	0.100	0.00547	U	ug/L	06.26.2020 16:54	1
4,4-DDT	50-29-3	0.0189 U	0.100	0.0189	UJ	ug/L	06.26.2020 16:54	1
Aldrin	309-00-2	0.00567 U	0.100	0.00567	U	ug/L	06.26.2020 16:54	1
Alpha-BHC	319-84-6	0.00711 U	0.100	0.00711	U	ug/L	06.26.2020 16:54	1
Alpha-Chlordane	5103-71-9	0.00904 U	0.100	0.00904	U	ug/L	06.26.2020 16:54	1
Beta-BHC	319-85-7	0.0194 U	0.100	0.0194	U	ug/L	06.26.2020 16:54	1
Delta-BHC	319-86-8	0.0123 U	0.100	0.0123	U	ug/L	06.26.2020 16:54	1
Dieldrin	60-57-1	0.00477 U	0.100	0.00477	U	ug/L	06.26.2020 16:54	1
Endosulfan I	959-98-8	0.00536 U	0.100	0.00536	U	ug/L	06.26.2020 16:54	1
Endosulfan II	33213-65-9	0.00609 U	0.100	0.00609	U	ug/L	06.26.2020 16:54	1
Endosulfan Sulfate	1031-07-8	0.00559 U	0.100	0.00559	U	ug/L	06.26.2020 16:54	1
Endrin	72-20-8	0.00779 U	0.100	0.00779	U	ug/L	06.26.2020 16:54	1
Endrin Aldehyde	7421-93-4	0.00592 U	0.100	0.00592	U	ug/L	06.26.2020 16:54	1
Endrin Ketone	53494-70-5	0.0100 U	0.100	0.0100	U	ug/L	06.26.2020 16:54	1
Gamma-BHC (Lindane)	58-89-9	0.0150 U	0.100	0.0150	U	ug/L	06.26.2020 16:54	1
Gamma-Chlordane	5103-74-2	0.0144 U	0.100	0.0144	U	ug/L	06.26.2020 16:54	1
Heptachlor	76-44-8	0.0223 U	0.100	0.0223	U	ug/L	06.26.2020 16:54	1
Heptachlor Epoxide	1024-57-3	0.00672 U	0.100	0.00672	U	ug/L	06.26.2020 16:54	1
Methoxychlor	72-43-5	0.0195 U	0.100	0.0195	UJ	ug/L	06.26.2020 16:54	1
Chlordane	12789-03-6	0.516 U	2.50	0.516	U	ug/L	06.26.2020 16:54	1
Toxaphene	8001-35-2	0.385 U	2.50	0.385	U	ug/L	06.26.2020 16:54	1

Surrogate	Cas Number	% Recovery	Units	Limits	Analysis Date	Flag
Tetrachloro-m-xylene	877-09-8	38	%	18-126	06.26.2020 16:54	
Decachlorobiphenyl	2051-24-3	51	%	15-136	06.26.2020 16:54	

Florida Flagging Criteria

Data were reviewed by the
Department Supervisor and QA Director

- A** Value reported is the mean (average) of two or more determinations.
- B** Results based upon colony counts outside the acceptable range.
- J** Estimated value; value not accurate. All results with a "J" qualifier require comment.
 - J1: Surrogate Recoveries exceed established QA/QC Limits
 - J2: No known QA/QC exists.
 - J3: Reported value failed to meet established QA/QC limits or the sample matrix interfered with the ability to make an accurate determination
 - J4: The data is questionable due to improper laboratory or field protocols
- Q** Sample held beyond the accepted holding time
- T** Value reported is less than the laboratory method detection limit. The value is reported for informational purposes, only and shall not be used in statistical analysis.
- U** Compound was analyzed for but not detected at the MDL Level.
- V** Analyte was detected in both the sample and the associated method blank.
- Y** Laboratory analysis was from an unpreserved or improperly preserved sample. The data may not be accurate.
- I** The reported value is between the laboratory MDL and the laboratory PQL.
- R** Significant rain in the past 48 hours.
- +** NELAC certification not offered for this compound.
- *** (Next to analyte name or method description) = Outside XENCO's scope of NELAC accreditation

Empire Environmental Indiantown

Analytical Method: Percent Moisture by SM2540G

Seq Number: 3130283

Matrix: Solid

MB Sample Id: 3130283-1-BLK

Parameter	MB Result	Units	Analysis Date	Flag
Percent Moisture	0.0300	%	06.29.2020 18:11	

Analytical Method: Percent Moisture by SM2540G

Seq Number: 3130283

Matrix: Soil

Parent Sample Id: 665179-020

MD Sample Id: 665179-020 D

Parameter	Parent Result	MD Result	%RPD	RPD Limit	Units	Analysis Date	Flag
Percent Moisture	22.5	20.5	9	10	%	06.29.2020 18:11	

Analytical Method: Percent Moisture by SM2540G

Seq Number: 3130283

Matrix: Soil

Parent Sample Id: 665519-001

MD Sample Id: 665519-001 D

Parameter	Parent Result	MD Result	%RPD	RPD Limit	Units	Analysis Date	Flag
Percent Moisture	10.3	10.5	2	10	%	06.29.2020 18:11	

Analytical Method: Arsenic By SW6020A

Seq Number: 3130381

Matrix: Solid

MB Sample Id: 7706422-1-BLK

LCS Sample Id: 7706422-1-BKS

Prep Method: SW3051

Date Prep: 06.30.2020

LCSD Sample Id: 7706422-1-BSD

Parameter	MB Result	Spike Amount	LCS Result	LCS %Rec	LCSD Result	LCSD %Rec	Limits	%RPD	RPD Limit	Units	Analysis Date	Flag
Arsenic	<0.0593	9.62	9.36	97	9.01	97	80-120	4	20	mg/kg	06.30.2020 15:30	

Analytical Method: Arsenic By SW6020A

Seq Number: 3130707

Matrix: Water

MB Sample Id: 7706531-1-BLK

LCS Sample Id: 7706531-1-BKS

Prep Method: SW3010A

Date Prep: 07.01.2020

LCSD Sample Id: 7706531-1-BSD

Parameter	MB Result	Spike Amount	LCS Result	LCS %Rec	LCSD Result	LCSD %Rec	Limits	%RPD	RPD Limit	Units	Analysis Date	Flag
Arsenic	<0.000246	0.100	0.0943	94	0.0960	96	80-120	2	20	mg/L	07.02.2020 16:19	

Analytical Method: Arsenic By SW6020A

Seq Number: 3130381

Matrix: Soil

Parent Sample Id: 665179-020

MS Sample Id: 665179-020 S

Prep Method: SW3051

Date Prep: 06.30.2020

MSD Sample Id: 665179-020 SD

Parameter	Parent Result	Spike Amount	MS Result	MS %Rec	MSD Result	MSD %Rec	Limits	%RPD	RPD Limit	Units	Analysis Date	Flag
Arsenic	6.29	10.8	14.9	80	18.2	94	75-125	20	30	mg/kg	06.30.2020 15:39	

MS/MSD Percent Recovery
 Relative Percent Difference
 LCS/LCSD Recovery
 Log Difference

$[D] = 100 * (C-A) / B$
 $RPD = 200 * [(C-E) / (C+E)]$
 $[D] = 100 * (C) / [B]$
 Log Diff. = Log(Sample Duplicate) - Log(Original Sample)

LCS = Laboratory Control Sample
 A = Parent Result
 C = MS/LCS Result
 E = MSD/LCSD Result

MS = Matrix Spike
 B = Spike Added
 D = MSD/LCSD % Rec

Empire Environmental Indiantown

Analytical Method: Arsenic By SW6020A

Seq Number: 3130707

Parent Sample Id: 665302-001

Matrix: Storm Water

MS Sample Id: 665302-001 S

Prep Method: SW3010A

Date Prep: 07.01.2020

MSD Sample Id: 665302-001 SD

Parameter	Parent Result	Spike Amount	MS Result	MS %Rec	MSD Result	MSD %Rec	Limits	%RPD	RPD Limit	Units	Analysis Date	Flag
Arsenic	<0.000246	0.100	0.0957	96	0.0962	96	75-125	1	20	mg/L	07.02.2020 16:28	

Analytical Method: Pesticides by SW-846 8081B

Seq Number: 3130073

MB Sample Id: 7706136-1-BLK

Matrix: Water

LCS Sample Id: 7706136-1-BKS

Prep Method: SW3510C

Date Prep: 06.25.2020

LCSD Sample Id: 7706136-1-BSD

Parameter	MB Result	Spike Amount	LCS Result	LCS %Rec	LCSD Result	LCSD %Rec	Limits	%RPD	RPD Limit	Units	Analysis Date	Flag
4,4-DDD	<0.00407	0.500	0.483	97	0.460	92	11-160	5	25	ug/L	06.25.2020 17:07	
4,4-DDE	<0.00547	0.500	0.447	89	0.433	87	15-157	3	25	ug/L	06.25.2020 17:07	
4,4-DDT	<0.0189	0.500	0.937	187	0.802	160	15-157	16	25	ug/L	06.25.2020 17:07	J
Aldrin	<0.00567	0.500	0.408	82	0.412	82	12-154	1	25	ug/L	06.25.2020 17:07	
Alpha-BHC	<0.00711	0.500	0.427	85	0.428	86	10-149	0	25	ug/L	06.25.2020 17:07	
Alpha-Chlordane	<0.00904	0.500	0.422	84	0.413	83	15-140	2	25	ug/L	06.25.2020 17:07	
Beta-BHC	<0.0194	0.500	0.442	88	0.437	87	10-151	1	25	ug/L	06.25.2020 17:07	
Delta-BHC	<0.0123	0.500	0.461	92	0.455	91	10-155	1	25	ug/L	06.25.2020 17:07	
Dieldrin	<0.00477	0.500	0.448	90	0.434	87	14-156	3	25	ug/L	06.25.2020 17:07	
Endosulfan I	<0.00536	0.500	0.441	88	0.433	87	12-155	2	25	ug/L	06.25.2020 17:07	
Endosulfan II	<0.00609	0.500	0.468	94	0.454	91	16-158	3	25	ug/L	06.25.2020 17:07	
Endosulfan Sulfate	<0.00559	0.500	0.517	103	0.497	99	17-159	4	25	ug/L	06.25.2020 17:07	
Endrin	<0.00779	0.500	0.494	99	0.482	96	14-169	2	25	ug/L	06.25.2020 17:07	
Endrin Aldehyde	<0.00592	0.500	0.356	71	0.341	68	22-148	4	25	ug/L	06.25.2020 17:07	
Endrin Ketone	<0.0100	0.500	0.630	126	0.588	118	28-154	7	25	ug/L	06.25.2020 17:07	
Gamma-BHC (Lindane)	<0.0150	0.500	0.449	90	0.450	90	8-157	0	25	ug/L	06.25.2020 17:07	
Gamma-Chlordane	<0.0144	0.500	0.433	87	0.431	86	18-141	0	25	ug/L	06.25.2020 17:07	
Heptachlor	<0.0223	0.500	0.466	93	0.467	93	10-157	0	25	ug/L	06.25.2020 17:07	
Heptachlor Epoxide	<0.00672	0.500	0.437	87	0.432	86	15-155	1	25	ug/L	06.25.2020 17:07	
Methoxychlor	<0.0195	0.500	1.17	234	0.964	193	25-161	19	25	ug/L	06.25.2020 17:07	J

Surrogate	MB %Rec	MB Flag	LCS %Rec	LCS Flag	LCSD %Rec	LCSD Flag	Limits	Units	Analysis Date
Tetrachloro-m-xylene	68		74		76		18-126	%	06.25.2020 17:07
Decachlorobiphenyl	50		76		72		15-136	%	06.25.2020 17:07

MS/MSD Percent Recovery
 Relative Percent Difference
 LCS/LCSD Recovery
 Log Difference

$[D] = 100 * (C-A) / B$
 $RPD = 200 * |(C-E) / (C+E)|$
 $[D] = 100 * (C) / [B]$
 Log Diff. = Log(Sample Duplicate) - Log(Original Sample)

LCS = Laboratory Control Sample
 A = Parent Result
 C = MS/LCS Result
 E = MSD/LCSD Result

MS = Matrix Spike
 B = Spike Added
 D = MSD/LCSD % Rec

Empire Environmental Indiantown

Analytical Method: Pesticides by SW-846 8081B

Seq Number: 3130240

MB Sample Id: 7706135-1-BLK

Matrix: Solid

LCS Sample Id: 7706135-1-BKS

Prep Method: SW3550

Date Prep: 06.25.2020

LCSD Sample Id: 7706135-1-BSD

Parameter	MB Result	Spike Amount	LCS Result	LCS %Rec	LCSD Result	LCSD %Rec	Limits	%RPD	RPD Limit	Units	Analysis Date	Flag
4,4-DDD	<0.000771	0.0167	0.0126	75	0.0128	77	20-164	2	25	mg/kg	06.29.2020 10:41	
4,4-DDE	<0.000833	0.0167	0.0110	66	0.0108	65	29-157	2	25	mg/kg	06.29.2020 10:41	
4,4-DDT	<0.000254	0.0167	0.00961	58	0.00976	58	13-192	2	25	mg/kg	06.29.2020 10:41	
Aldrin	<0.000363	0.0167	0.00710	43	0.00641	38	30-152	10	25	mg/kg	06.29.2020 10:41	
Alpha-BHC	<0.000680	0.0167	0.00692	41	0.00610	37	29-160	13	25	mg/kg	06.29.2020 10:41	
Alpha-Chlordane	<0.000571	0.0167	0.00952	57	0.00932	56	30-154	2	25	mg/kg	06.29.2020 10:41	
Beta-BHC	<0.000474	0.0167	0.0104	62	0.0101	60	30-155	3	25	mg/kg	06.29.2020 10:41	
Delta-BHC	<0.000833	0.0167	0.0106	63	0.0104	62	20-161	2	25	mg/kg	06.29.2020 10:41	
Dieldrin	<0.000169	0.0167	0.0106	63	0.0102	61	33-153	4	25	mg/kg	06.29.2020 10:41	
Endosulfan I	<0.000202	0.0167	0.0101	60	0.00982	59	30-151	3	25	mg/kg	06.29.2020 10:41	
Endosulfan II	<0.000372	0.0167	0.0123	74	0.0122	73	27-153	1	25	mg/kg	06.29.2020 10:41	
Endosulfan Sulfate	<0.000276	0.0167	0.0126	75	0.0128	77	15-170	2	25	mg/kg	06.29.2020 10:41	
Endrin	<0.000291	0.0167	0.0128	77	0.0126	75	25-162	2	25	mg/kg	06.29.2020 10:41	
Endrin Aldehyde	<0.000247	0.0167	0.00886	53	0.00899	54	49-117	1	25	mg/kg	06.29.2020 10:41	
Endrin Ketone	<0.000361	0.0167	0.0130	78	0.0132	79	15-168	2	25	mg/kg	06.29.2020 10:41	
Gamma-BHC (Lindane)	<0.000439	0.0167	0.00737	44	0.00662	40	30-158	11	25	mg/kg	06.29.2020 10:41	
Gamma-Chlordane	<0.000763	0.0167	0.00897	54	0.00907	54	30-154	1	25	mg/kg	06.29.2020 10:41	
Heptachlor	<0.000562	0.0167	0.00715	43	0.00632	38	29-163	12	25	mg/kg	06.29.2020 10:41	
Heptachlor Epoxide	<0.000245	0.0167	0.00978	59	0.00934	56	30-150	5	25	mg/kg	06.29.2020 10:41	
Methoxychlor	<0.000507	0.0167	0.00966	58	0.00993	59	33-174	3	25	mg/kg	06.29.2020 10:41	
Surrogate	MB %Rec	MB Flag	LCS %Rec	LCS Flag	LCSD %Rec	LCSD Flag	Limits			Units	Analysis Date	
Tetrachloro-m-xylene	49		37		33	J	35-135			%	06.29.2020 10:41	
Decachlorobiphenyl	53		53		54		25-143			%	06.29.2020 10:41	

MS/MSD Percent Recovery
 Relative Percent Difference
 LCS/LCSD Recovery
 Log Difference

[D] = $100 * (C-A) / B$
 RPD = $200 * | (C-E) / (C+E) |$
 [D] = $100 * (C) / [B]$
 Log Diff. = $\text{Log}(\text{Sample Duplicate}) - \text{Log}(\text{Original Sample})$

LCS = Laboratory Control Sample
 A = Parent Result
 C = MS/LCS Result
 E = MSD/LCSD Result

MS = Matrix Spike
 B = Spike Added
 D = MSD/LCSD % Rec

Empire Environmental Indiantown

Analytical Method: Pesticides by SW-846 8081B

Seq Number: 3130240

Parent Sample Id: 665357-001

Matrix: Soil

MS Sample Id: 665357-001 S

Prep Method: SW3550

Date Prep: 06.25.2020

MSD Sample Id: 665357-001 SD

Parameter	Parent Result	Spike Amount	MS Result	MS %Rec	MSD Result	MSD %Rec	Limits	%RPD	RPD Limit	Units	Analysis Date	Flag
4,4-DDD	<0.00170	0.0368	0.0289	79	0.0274	74	20-164	5	25	mg/kg	06.29.2020 11:08	
4,4-DDE	<0.00184	0.0368	0.0272	74	0.0257	70	29-157	6	25	mg/kg	06.29.2020 11:08	
4,4-DDT	<0.000561	0.0368	0.0247	67	0.0238	64	13-192	4	25	mg/kg	06.29.2020 11:08	
Aldrin	<0.000801	0.0368	0.0214	58	0.0180	49	30-152	17	25	mg/kg	06.29.2020 11:08	
Alpha-BHC	<0.00150	0.0368	0.0226	61	0.0174	47	29-160	26	25	mg/kg	06.29.2020 11:08	J
Alpha-Chlordane	<0.00126	0.0368	0.0243	66	0.0229	62	30-154	6	25	mg/kg	06.29.2020 11:08	
Beta-BHC	<0.00105	0.0368	0.0265	72	0.0246	67	30-155	7	25	mg/kg	06.29.2020 11:08	
Delta-BHC	<0.00184	0.0368	0.0270	73	0.0247	67	20-161	9	25	mg/kg	06.29.2020 11:08	
Dieldrin	<0.000374	0.0368	0.0263	71	0.0248	67	33-153	6	25	mg/kg	06.29.2020 11:08	
Endosulfan I	<0.000446	0.0368	0.0259	70	0.0241	65	30-151	7	25	mg/kg	06.29.2020 11:08	
Endosulfan II	<0.000822	0.0368	0.0287	78	0.0268	73	27-153	7	25	mg/kg	06.29.2020 11:08	
Endosulfan Sulfate	<0.000609	0.0368	0.0282	77	0.0266	72	15-170	6	25	mg/kg	06.29.2020 11:08	
Endrin	<0.000643	0.0368	0.0313	85	0.0295	80	25-162	6	25	mg/kg	06.29.2020 11:08	
Endrin Aldehyde	<0.000546	0.0368	0.0222	60	0.0203	55	49-117	9	25	mg/kg	06.29.2020 11:08	
Endrin Ketone	<0.000797	0.0368	0.0292	79	0.0286	78	15-168	2	25	mg/kg	06.29.2020 11:08	
Gamma-BHC (Lindane)	<0.000969	0.0368	0.0227	62	0.0189	51	30-158	18	25	mg/kg	06.29.2020 11:08	
Gamma-Chlordane	<0.00169	0.0368	0.0230	63	0.0218	59	30-154	5	25	mg/kg	06.29.2020 11:08	
Heptachlor	<0.00124	0.0368	0.0222	60	0.0184	50	29-163	19	25	mg/kg	06.29.2020 11:08	
Heptachlor Epoxide	<0.000541	0.0368	0.0256	70	0.0236	64	30-150	8	25	mg/kg	06.29.2020 11:08	
Methoxychlor	<0.00112	0.0368	0.0246	67	0.0236	64	33-174	4	25	mg/kg	06.29.2020 11:08	

Surrogate

	MS %Rec	MS Flag	MSD %Rec	MSD Flag	Limits	Units	Analysis Date
Tetrachloro-m-xylene	58		40		35-135	%	06.29.2020 11:08
Decachlorobiphenyl	56		52		25-143	%	06.29.2020 11:08

MS/MSD Percent Recovery
 Relative Percent Difference
 LCS/LCSD Recovery
 Log Difference

$[D] = 100 * (C-A) / B$
 $RPD = 200 * |(C-E) / (C+E)|$
 $[D] = 100 * (C) / [B]$
 Log Diff. = Log(Sample Duplicate) - Log(Original Sample)

LCS = Laboratory Control Sample
 A = Parent Result
 C = MS/LCS Result
 E = MSD/LCSD Result

MS = Matrix Spike
 B = Spike Added
 D = MSD/LCSD % Rec

Inter-Office Shipment

IOS Number: **66059**

Date/Time: 06.25.2020

Lab# From: **South Florida**

Lab# To: **Houston**

Created by: Jessica Magierowski

Delivery Priority:

Air Bill No.: 770806001090

Please send report to: Matthew Jones

Address: Xenco Laboratories

E-Mail: matthew.jones@xenco.com

Sample Id	Matrix	Client Sample Id	Sample Collection	Method	Method Name	Lab Due	HT Due	PM	Analytes	Sign
665519-001	S	SB-1	06.25.2020 08:50	SW6020_AS	Arsenic By SW6020A	07.01.2020	12.22.2020	MAJ	AS	
665519-001	S	SB-1	06.25.2020 08:50	SW8081B	Pesticides by SW-846 8081B	07.01.2020	07.09.2020	MAJ	ALDRIN BHCALPHA BI	
665519-001	S	SB-1	06.25.2020 08:50	SM2540G-MOIST	Percent Moisture by SM2540G	07.01.2020	12.22.2020	MAJ	MOIST	
665519-002	W	MW-1	06.25.2020 09:15	SW8081B	Pesticides by SW-846 8081B	07.01.2020	07.02.2020	MAJ	ALDRIN BHCALPHA BI	
665519-002	W	MW-1	06.25.2020 09:15	SW6020_AS	Arsenic By SW6020A	07.01.2020	12.22.2020	MAJ	AS	
665519-003	S	SB-2	06.25.2020 09:10	SW6020_AS	Arsenic By SW6020A	07.01.2020	12.22.2020	MAJ	AS	
665519-003	S	SB-2	06.25.2020 09:10	SM2540G-MOIST	Percent Moisture by SM2540G	07.01.2020	12.22.2020	MAJ	MOIST	
665519-003	S	SB-2	06.25.2020 09:10	SW8081B	Pesticides by SW-846 8081B	07.01.2020	07.09.2020	MAJ	ALDRIN BHCALPHA BI	
665519-004	W	MW-2	06.25.2020 09:47	SW8081B	Pesticides by SW-846 8081B	07.01.2020	07.02.2020	MAJ	ALDRIN BHCALPHA BI	
665519-004	W	MW-2	06.25.2020 09:47	SW6020_AS	Arsenic By SW6020A	07.01.2020	12.22.2020	MAJ	AS	
665519-005	S	SB-3	06.25.2020 09:15	SW6020_AS	Arsenic By SW6020A	07.01.2020	12.22.2020	MAJ	AS	
665519-005	S	SB-3	06.25.2020 09:15	SW8081B	Pesticides by SW-846 8081B	07.01.2020	07.09.2020	MAJ	ALDRIN BHCALPHA BI	
665519-005	S	SB-3	06.25.2020 09:15	SM2540G-MOIST	Percent Moisture by SM2540G	07.01.2020	12.22.2020	MAJ	MOIST	
665519-006	W	MW-3	06.25.2020 09:40	SW8081B	Pesticides by SW-846 8081B	07.01.2020	07.02.2020	MAJ	ALDRIN BHCALPHA BI	
665519-006	W	MW-3	06.25.2020 09:40	SW6020_AS	Arsenic By SW6020A	07.01.2020	12.22.2020	MAJ	AS	
665519-007	S	SB-4	06.25.2020 09:08	SW8081B	Pesticides by SW-846 8081B	07.01.2020	07.09.2020	MAJ	ALDRIN BHCALPHA BI	
665519-007	S	SB-4	06.25.2020 09:08	SM2540G-MOIST	Percent Moisture by SM2540G	07.01.2020	12.22.2020	MAJ	MOIST	
665519-007	S	SB-4	06.25.2020 09:08	SW6020_AS	Arsenic By SW6020A	07.01.2020	12.22.2020	MAJ	AS	
665519-008	W	MW-4	06.25.2020 09:22	SW6020_AS	Arsenic By SW6020A	07.01.2020	12.22.2020	MAJ	AS	
665519-008	W	MW-4	06.25.2020 09:22	SW8081B	Pesticides by SW-846 8081B	07.01.2020	07.02.2020	MAJ	ALDRIN BHCALPHA BI	

Inter-Office Shipment

IOS Number : **66059**

Date/Time: 06.25.2020

Lab# From: **South Florida**

Lab# To: **Houston**

Created by: Jessica Magierowski

Delivery Priority:

Air Bill No.: 770806001090

Please send report to: Matthew Jones

Address: Xenco Laboratories

E-Mail: matthew.jones@xenco.com

Inter Office Shipment or Sample Comments:

Relinquished By:



Jessica Magierowski

Date Relinquished: 06.25.2020

Received By:



Shadi Alshrouf

Date Received: 06.26.2020

Cooler Temperature: 1.8



XENCO Laboratories

Inter Office Report- Sample Receipt Checklist

Sent To: Houston

IOS #: 66059

Acceptable Temperature Range: 0 - 6 degC

Air and Metal samples Acceptable Range: Ambient

Temperature Measuring device used : hou-068

Sent By: Jessica Magierowski

Date Sent: 06.25.2020 01.22 PM

Received By: Shadi Alshrouf

Date Received: 06.26.2020 09.00 AM

Sample Receipt Checklist

Comments

#1 *Temperature of cooler(s)?	1.8
#2 *Shipping container in good condition?	Yes
#3 *Samples received with appropriate temperature?	Yes
#4 *Custody Seals intact on shipping container/ cooler?	N/A
#5 *Custody Seals Signed and dated for Containers/coolers	N/A
#6 *IOS present?	Yes
#7 Any missing/extra samples?	No
#8 IOS agrees with sample label(s)/matrix?	Yes
#9 Sample matrix/ properties agree with IOS?	Yes
#10 Samples in proper container/ bottle?	Yes
#11 Samples properly preserved?	Yes
#12 Sample container(s) intact?	Yes
#13 Sufficient sample amount for indicated test(s)?	Yes
#14 All samples received within hold time?	Yes

* Must be completed for after-hours delivery of samples prior to placing in the refrigerator

NonConformance:

Corrective Action Taken:

Nonconformance Documentation

Contact: _____ Contacted by : _____ Date: _____

Checklist reviewed by:

Shadi Alshrouf

Date: 06.26.2020

XENCO Laboratories
Prelogin/Nonconformance Report- Sample Log-In

Client: Empire Environmental

Date/ Time Received: 06.25.2020 12.10.00 PM

Work Order #: 665519

Acceptable Temperature Range: 0 - 6 degC

Air and Metal samples Acceptable Range: Ambient

Temperature Measuring device used : IR#1

Sample Receipt Checklist	Comments
#1 *Temperature of cooler(s)?	4
#2 *Shipping container in good condition?	Yes
#3 *Samples received on ice?	Yes
#4 *Custody Seals intact on shipping container/ cooler?	N/A
#5 Custody Seals intact on sample bottles?	N/A
#6 *Custody Seals Signed and dated?	N/A
#7 *Chain of Custody present?	Yes
#8 Any missing/extra samples?	No
#9 Chain of Custody signed when relinquished/ received?	Yes
#10 Chain of Custody agrees with sample labels/matrix?	Yes
#11 Container label(s) legible and intact?	Yes
#12 Samples in proper container/ bottle?	Yes
#13 Samples properly preserved?	Yes
#14 Sample container(s) intact?	Yes
#15 Sufficient sample amount for indicated test(s)?	Yes
#16 All samples received within hold time?	Yes
#17 Subcontract of sample(s)?	Yes
#18 Water VOC samples have zero headspace?	N/A

*** Must be completed for after-hours delivery of samples prior to placing in the refrigerator**

Analyst:

PH Device/Lot#:

Checklist completed by:



Diana Magierowski

Date: 06.25.2020

Checklist reviewed by:



Matthew Jones

Date: 06.25.2020



Chain of Custody

Houston, TX (281) 240-4200 Dallas, TX (214) 902-0300 San Antonio, TX (210) 509-3334
Midland, TX (432) 704-5440 EL Paso, TX (915) 585-3443 Lubbock, TX (806) 794-1296
Phoenix, AZ (480) 355-0900 Atlanta, GA (770) 449-8900 Tampa, FL (813) 620-2000 West Palm Beach, FL (561) 689-6701

Work Order No: 665519

www.xenco.com

Page 1 of 1

Project Manager:	Mike Music
Company Name:	Empire Environmental
Address:	Asa Lane
City, State ZIP:	Stoner FL 34996
Phone:	
Bill to: (if different)	
Company Name:	
Address:	
City, State ZIP:	
Email:	

Work Order Comments

Program: ☐ UST/PST ☐ PRP ☐ Brownfields ☐ RRC ☐ Superfund ☐

State of Project:

Reporting: Level II ☐ Level III ☐ PST/UST ☐ TRRP ☐ Level IV ☐

Deliverables: EDD ☐ ADaPT ☐ Other:

ANALYSIS REQUEST

Project Name:	Indian Town	Turn Around		Pres. Code		MeOH: Me
Project Number:		<input type="checkbox"/> Routine				None: NO
Project Location:		Rush:				HNO3: HN
Sampler's Name:	Mike Music	Due Date:				H2SO4: H2
PO #:		Quote #:				HCL: HL
SAMPLE RECEIPT		Temp Blank:	Yes No	Wet Ice:	Yes No	NaOH: Na
Temperature (°C):	20.0	Thermometer ID:	IP #1			Zn Acetate: NaOH: Zn
Received Intact:	Yes No	Correction Factor:				TAT starts the day received by the lab, it received by 4:00pm
Cooler Custody Seals:	Yes No N/A	Total Containers:				
Sample Custody Seals:	Yes No N/A					

Lab ID	Sample Identification	Matrix	Date Sampled	Time Sampled	Depth	Number of Containers	Pres. Code	Sample Comments
SB-1	MW-1	S	6/25	150	2.5'	1		
MW-2	SB-2	GW	9/10	915	2.5'	2		
SB-3	MW-3	S	9/10	915	2.5'	1		
MW-4	SB-4	GW	9/10	940	2.5'	2		
		S	6/25	908	2.5'	1		
		GW	6/25	922	2.5'	2		

Total 200.7 / 6010	200.8 / 6020:	8RCRA 13PPM Texas 11	Al Sb As Ba Be B Cd Ca Cr Co Cu Fe Pb Mg Mn Mo Ni K Se Ag SiO2 Na Sr Ti Sn U V Zn
Circle Method(s) and Metal(s) to be analyzed		TCLP / SPLP 6010: 8RCRA Sb As Ba Be Cd Cr Co Cu Pb Mn Mo Ni Se Ag Ti U	1631 / 245.1 / 7470 / 7471 : Hg

Notice: Signature of this document and relinquishment of samples constitutes a valid purchase order from client company to Xenco, its affiliates and subcontractors. It assigns standard terms and conditions of service. Xenco will be liable only for the cost of samples and shall not assume any responsibility for any losses or expenses incurred by the client if such losses are due to circumstances beyond the control of Xenco. A minimum charge of \$75.00 will be applied to each project and a charge of \$5 for each sample submitted to Xenco, but not analyzed. These terms will be enforced unless previously negotiated.

Relinquished by: (Signature)	Received by: (Signature)	Relinquished by: (Signature)	Received by: (Signature)	Date/Time
Paul H	Paul H			6/25/20 13:10

U.S. Census Bureau
Atlanta Region

Mr. George Grandy, Jr.
Regional Director

June 25, 2020

FLORIDA

2020 Census Self-Response Weekly Highlights



North Florida

Hello, Franklin County Calling

The Franklin County Complete Count Committee, working in tandem with Franklin County Administrator Michael Moron, created “Franklin County Census Cell Phone Alerts.” These alerts are currently sent out on a weekly basis but over time the frequency of the alerts will be increased to encourage 2020 Census participation. The Franklin County Census Alert also invites respondents who completed their census to enter a contest for a chance to win \$25.



Small City Goes Big on 2020 Census

With a population of 1,168, Webster is the 329th largest city in Florida. But the town is going big on its 2020 Census outreach. According to census data, Webster is currently growing at a rate of 2.37 percent annually and its population has increased by 48.79 percent since the last census, which recorded a population of 785 in 2010. The city is aware of how crucial federal dollars are for keeping up with this growth. They dedicated part of the front page of the city's website to the 2020 Census and they are reaching out weekly on social media, in city offices, schools, churches and community organizations. The response rate in Webster has steadily increased every week and is currently at 42.4 percent.



Census is Trucking in Fort Walton

Everybody must eat, and everyone needs to be counted in the 2020 Census even in times of social distancing. Recently two local food trucks served up good food and the census message in Fort Walton Beach. Bo Knight of Krusy Krabb and Tonie Greene-Scott of the Gumbo House know how to serve up good food, know the importance of the census and how vital the 2020 Census is to their businesses. “Friends, family and customers if they come here, they’re going to hear about the census from me. If they don’t know they’re going to know,” said Greene-Scott.



Central Florida

Double the Goodies

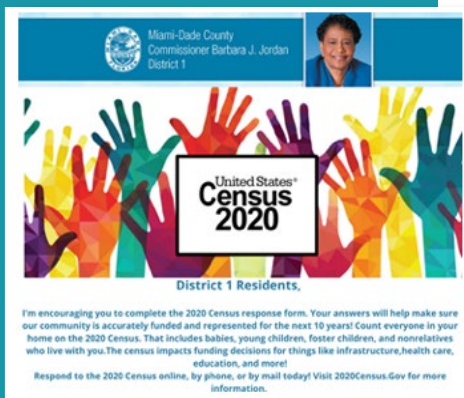
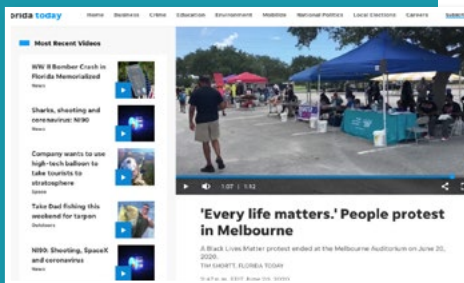
The Family Resource Center of Central Tampa invited fathers and father figures to a Father's Day celebration the weekend of June 18 and 19. Each honoree received a private presentation, in accordance with COVID-19 guidelines, that included a bonus: a census tote bag with 2020 Census information and memorabilia. Center Manager Cheryl Fitzpatrick, and Family Resource and Service Coordinator Greyling Wall welcomed the census contributions. Ongoing outreach efforts at Family Resource Centers throughout Hillsborough County will continue with logistical support from Trish James, director of conference services to encourage residents to do their part to be counted in 2020.

Florida
Self-Response

58.7%

National
Self-Response

61.7%



March for the Census in Melbourne

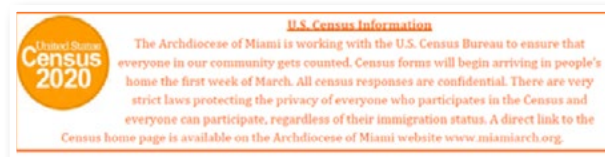
During a recent protest rally in Melbourne in Brevard County, partners showed their commitment to educating their community on the importance of completing the 2020 Census. Denise Carter of the city of Melbourne, Wayne Price of the Space Coast Health Foundation, Marcus Smith of Kappa Alpha Psi, and members of the Delta Sigma Theta, Alpha Kappa Alpha, and Sigma Gamma Rho sororities attended the event. The partners marched 1.5 miles carrying a 2020 Census banner, which was sponsored by the City of Melbourne. During the event, several attendees completed their 2020 Census online. The partners, volunteers, and Partnership Specialist Nicolet Severe handed out 2020 Census informational materials.

South Florida Commissioner Urges Census Response

Miami Dade County Commissioner Barbara Jordan encourages the residents of District 1 to respond to the 2020 Census online, by phone or by mail. Her message is "Your answers will make sure our community is accurately funded and represented for the next 10 years! Count everyone in your home in the 2020 Census! That includes babies, young children, foster children, and nonrelatives who live with you! The Census impacts funding decisions for things like infrastructure, healthcare, education and more!"

Raffle for Census

The Lake Okeechobee Rural Health Network in Palm Beach Gardens, FL, will celebrate Census Action Day by conducting a raffle giveaway contest on its Facebook page in hopes of increasing awareness in their rural communities. They are asking folks to tag other community leaders, members, and organizations and share it on their pages to help spread the word! They are raffling a hurricane preparedness kit. To enter the raffle people are asked to follow these steps: like the agency's Facebook page; tag three friends in the comments of a post about the raffle, and challenge them to complete the census (every three friends = one raffle entry); then share the post on your timeline, tag the agency, and include the hashtags #CompleteTheCensus, #LORHN and the name of the town you live in. All three steps must be completed to enter the raffle. The winner will be announced via Facebook Live on July 1.



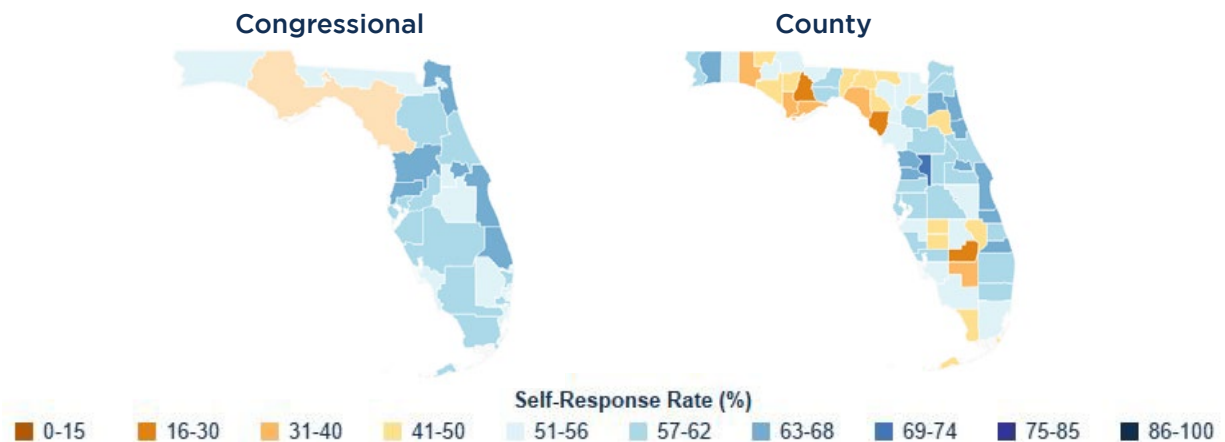
Florida Keys Church Says Respond!

San Pedro Catholic Church, located in the Florida Keys village of Tavernier, promotes its participation in the 2020 Census through its weekly bulletin. Church members highlight the partnership between the Archdiocese of Miami and the U.S. Census Bureau and stress the confidentiality of the process. They also encourage parishioners who visit the archdiocese website to respond to the census.

STATE OF FLORIDA RANKING BY COUNTY

Self-Response Rate as of 6.25.2020

1 Sumter, Florida	69.1%	24 Palm Beach, Florida	59.6%	47 Union, Florida	50.1%
2 St. Johns, Florida	67.5%	25 Wakulla, Florida	59.5%	48 Putnam, Florida	49.1%
3 Seminole, Florida	67.3%	26 Nassau, Florida	59.1%	49 Jefferson, Florida	48.2%
4 Hernando, Florida	67.2%	27 Leon, Florida	58.5%	49 Holmes, Florida	48.2%
5 Brevard, Florida	66.8%	28 Orange, Florida	58.3%	51 Okeechobee, Florida	45.0%
6 Flagler, Florida	66.6%	29 Polk, Florida	57.4%	52 DeSoto, Florida	44.4%
7 Santa Rosa, Florida	66.5%	29 Broward, Florida	57.4%	53 Madison, Florida	43.8%
8 Citrus, Florida	64.8%	31 Okaloosa, Florida	56.8%	54 Calhoun, Florida	43.4%
9 Indian River, Florida	64.7%	31 Gilchrist, Florida	56.8%	54 Bay, Florida	43.4%
10 Clay, Florida	64.6%	33 Miami-Dade, Florida	56.5%	56 Lafayette, Florida	42.9%
11 Martin, Florida	64.3%	34 Highlands, Florida	56.4%	57 Monroe, Florida	42.5%
12 Marion, Florida	62.7%	35 Lee, Florida	55.8%	58 Hamilton, Florida	42.3%
13 Pasco, Florida	62.5%	36 Manatee, Florida	55.7%	59 Hardee, Florida	41.9%
14 Volusia, Florida	62.3%	37 Suwannee, Florida	54.0%	60 Hendry, Florida	39.4%
14 Pinellas, Florida	62.3%	37 Jackson, Florida	54.0%	61 Taylor, Florida	37.3%
14 Duval, Florida	62.3%	39 Columbia, Florida	53.6%	62 Gulf, Florida	34.5%
17 Sarasota, Florida	62.1%	40 Baker, Florida	52.9%	63 Franklin, Florida	31.9%
18 St. Lucie, Florida	62.0%	41 Gadsden, Florida	52.6%	64 Walton, Florida	31.0%
19 Alachua, Florida	61.2%	42 Osceola, Florida	52.3%	65 Glades, Florida	30.9%
20 Charlotte, Florida	60.9%	43 Bradford, Florida	52.2%	66 Liberty, Florida	29.5%
21 Hillsborough, Florida	60.3%	44 Washington, Florida	51.8%	67 Dixie, Florida	28.8%
22 Lake, Florida	59.7%	45 Collier, Florida	51.7%		
22 Escambia, Florida	59.7%	46 Levy, Florida	51.0%		



Please respond online or by phone:

MY2020CENSUS.GOV

1.844.330.2020

SELF-RESPONSE RATES FOR CONGRESSIONAL DISTRICTS

STATE OF FLORIDA



Matt Gaetz
District 1
55.2%



Neal Dunn
District 2
50.8%



Ted Yoho
District 3
59.2%



John Rutherford
District 4
65.7%



Al Lawson
District 5
55.3%



Michael Waltz
District 6
62.0%



Stephanie Murphy
District 7
64.0%



Bill Posey
District 8
66.2%



Darren Soto
District 9
55.8%



Val Demings
District 10
56.7%



Daniel Webster
District 11
65.5%



Gus Bilirakis
District 12
64.6%



Charlie Crist
District 13
60.4%



Kathy Castor
District 14
59.3%



Ross Spano
District 15
59.8%



Vern Buchanan
District 16
58.1%

Please respond online or by phone:

MY2020CENSUS.GOV
1.844.330.2020

SELF-RESPONSE RATES FOR CONGRESSIONAL DISTRICTS STATE OF FLORIDA



Greg Steube
District 17
58.9%



Brian Mast
District 18
63.3%



Francis Rooney
District 19
53.7%



Alcee Hastings
District 20
55.9%



Lois Frankel
District 21
60.3%



Ted Deutch
District 22
54.1%



Debbie Wasserman Schultz
District 23
58.4%



Frederica Wilson
District 24
53.2%



Mario Diaz-Balart
District 25
59.0%



Debbie Mucarsel-Powell
District 26
59.9%



Donna Shalala
District 27
53.8%

Please respond online or by phone:

MY2020CENSUS.GOV

1.844.330.2020

**¡Cuenten a todos
una vez, en el
lugar correcto!**



**¡Haz que
2020 cuente!**

Dale forma
a tu futuro
EMPIEZA AQUÍ >

United States
**Census
2020**

Memorandum

TO: Howard Brown, Village of Indiantown Manager

FROM: Code Compliance Officer

DATE: July 15th, 2020

RE: Code Compliance Bi-Monthly Update Summary

Code Compliance Cases

- Total code cases – 37
- Opened during this reporting period – 10
- Opened by complaint received – 6
- Opened by inspector observations – 4

Top Five (5) Violations

- Overgrown Properties
- Building Permit Violations
- Illegal Parking
- Inoperable Vehicles
- Excessive Amounts of Trash/Debris

Illegal Snipe Signs and Right of Way Issues

- Code collected 20 illegal snipe signs from public right of way.

Coronavirus objectives

- Observe, and report any public hazards to the appropriate local government entity.
- Prevent any large public gatherings.
- Accurately inform the public of any local, state, and national updates.
- Respond to complaints and/or Code Compliance inquiries.
- Enforce local, county, and state COVID -19 orders through educational outreach.
- Processing Cases for Special Magistrate Hearing (August 18th, 2020)



Date: July 15, 2020

JULY 2020 PERMITS

Category	Percentage
BUILDING	60%
ELECTRICAL	27%
PLUMBING	7%
MECHANICAL	6%
TENT	0%
FIRE	0%
OTHER	0%

Construction Project Values For the Month	
Construction Value	\$570,512.00
Grand Total	\$570,512.00